

The following Notice to Mariners is published for general information

AUSTRALIA – VICTORIA

No. 313 (T) - 2020

PORT OF MELBOURNE

PORT PHILLIP - SOUTH CHANNEL – SHOAL AREA – TEMPORARY VIRTUAL AID TO NAVIGATION ESTABLISHED

Date: 09 November 2020.

Refers: NA

Details: Mariners are advised that recent surveys in the South Channel have identified an area of shoaling which is marked by a virtual buoy in the following location:

- Identification Message – TB3
- Established in position 38° 17.6821' S 144° 41.3302' E
- Minimum Depth 15.2 m

The virtual buoy is located approximately 60 metres from the toe line of the Entrance Beacon. All vessels are advised to pass to the North of this position.

The transit of deep draught vessels of 11.6 m and over will continue to be managed by the DUKC.

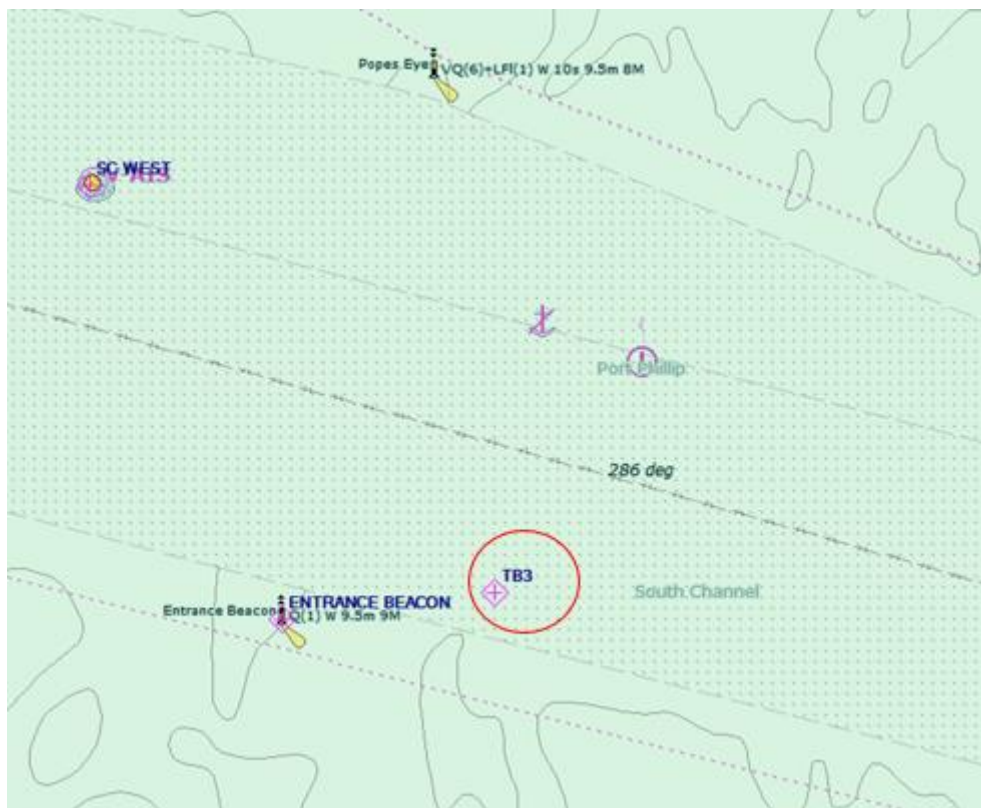
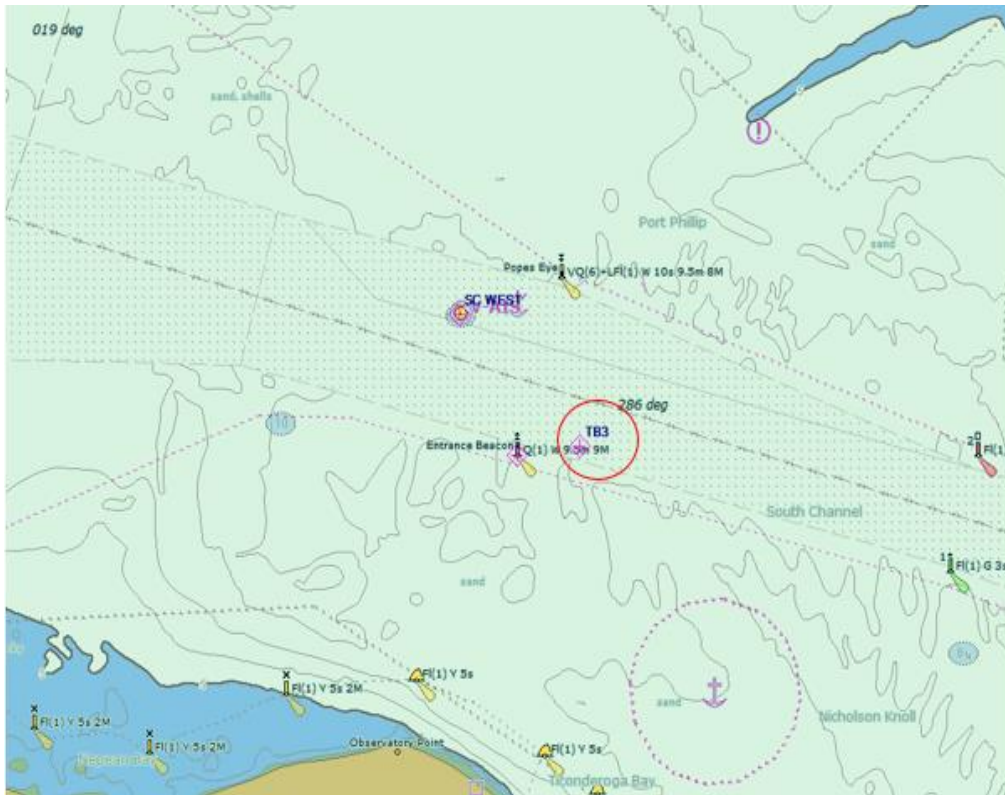
Mariners are advised to navigate with caution in the vicinity of the virtual buoy.

Charts affected: AUS 143, AUS 144, AUS 158
(ENC Cell Number) - AU 5144, AU 438144, AU 439144 respectively.

Further notice: A further notice will be issued.



Roy Stanbrook
Acting Harbour Master
(as Kell Dillon on leave)



This notice is a direction of the Harbour Master pursuant to section 232 of the *Marine Safety Act 2010* (Vic)
 The requirements of section 232(2) have been taken into account.

Victorian Notices to Mariners can be downloaded from the Victorian Ports Corporation (Melbourne) website
www.vicports.vic.gov.au