

The following Notice to Mariners is published for general information

**AUSTRALIA – VICTORIA**

**No. 122 (T) - 2021**

**PORT OF MELBOURNE**

**PORT PHILLIP - SOUTH CHANNEL – SHOAL AREA –  
TEMPORARY VIRTUAL AID TO NAVIGATION TB3 AND TB4 RELOCATED**

**Date:** 10 May 2021

**Refers:** NtM 313 (T) / 2020 and is hereby cancelled  
NtM 015 (T) / 2021 and is hereby cancelled

**Details:** Mariners are advised that recent surveys in the South Channel have identified areas of shoaling which is marked by a virtual buoy in the following location:

- Identification Message –TB3 and TB4
- Established in position - TB3 to 38° 17 .721S, 144° 41.544E, and  
TB4 to 38° 18 .078S, 144° 43.469E

The virtual buoys TB3 and TB4 have been established to mark the shoaling. Deep Draught vessels with draught greater than 13.5m are advised to pass north of TB3, and either to the South or to the North of TB4.

**Mariners are advised to navigate with caution in the vicinity of the virtual buoy.**

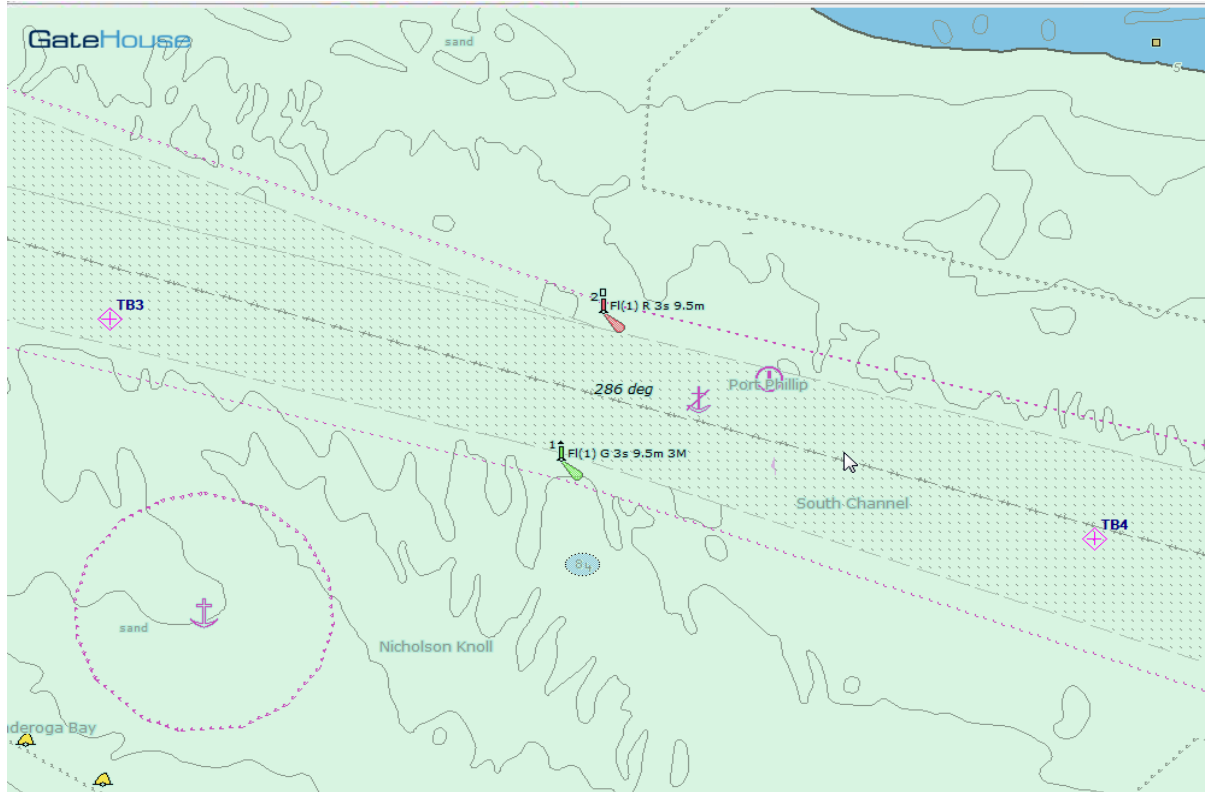
**Charts affected:** AUS 143, AUS 144, AUS 158  
(ENC Cell Number) - AU 5144, AU 438144, AU 439144 respectively.

**Further notice:** A further notice will be issued.

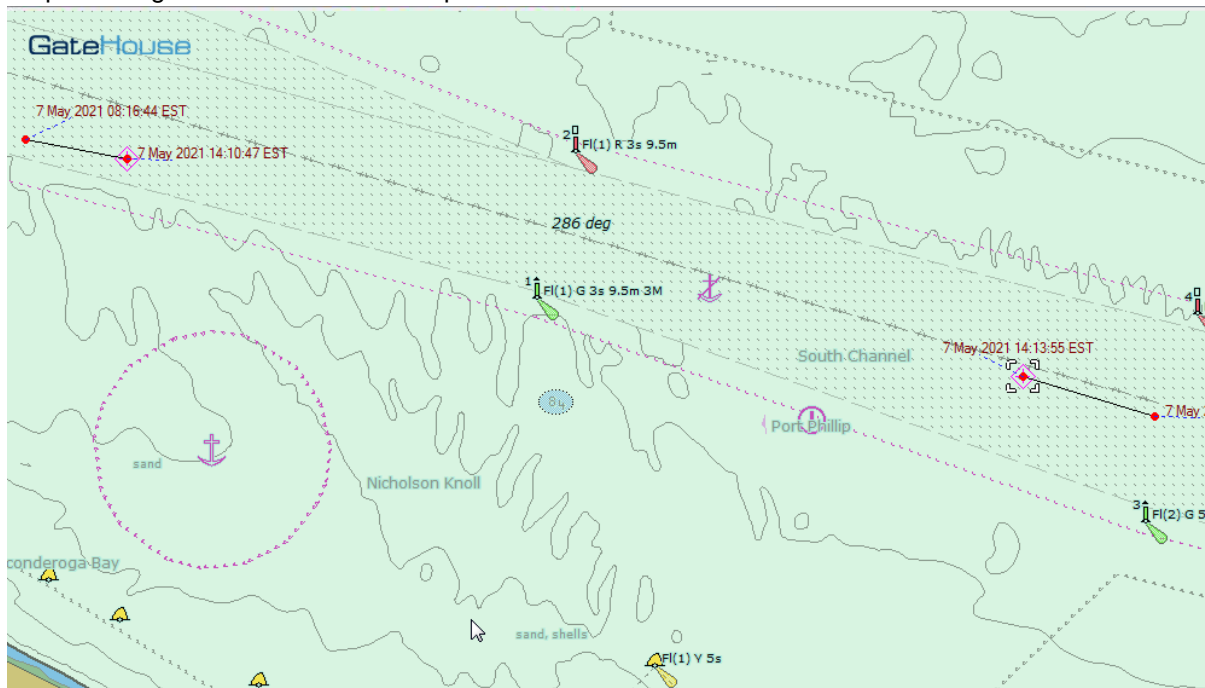


**Kell Dilon  
Harbour Master**

TB3 and TB4 relocated



Snip showing old and new reference point:

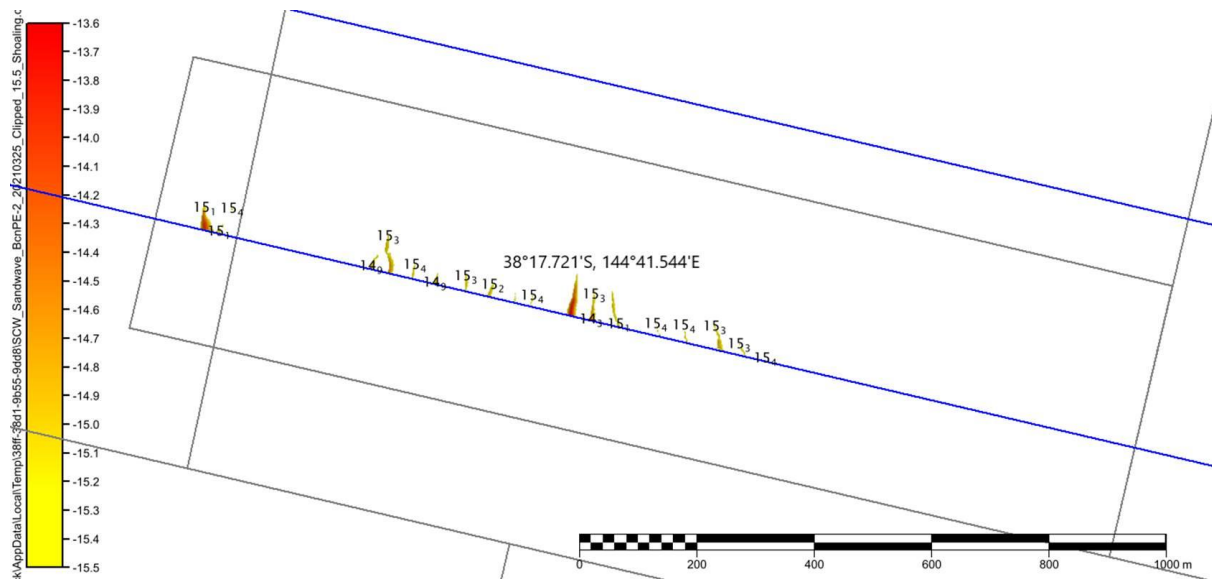


This notice is a direction of the Harbour Master pursuant to section 232 of the *Marine Safety Act 2010* (Vic)  
The requirements of section 232(2) have been taken into account.

Victorian Notices to Mariners can be downloaded from the Victorian Ports Corporation (Melbourne) website  
[www.vicports.vic.gov.au](http://www.vicports.vic.gov.au)

South Channel BcnPE-2:

Lat: 38deg 17.721'S Long: 144 deg 41.544'E Depth -15.3m



South Channel - Bcn2-4:

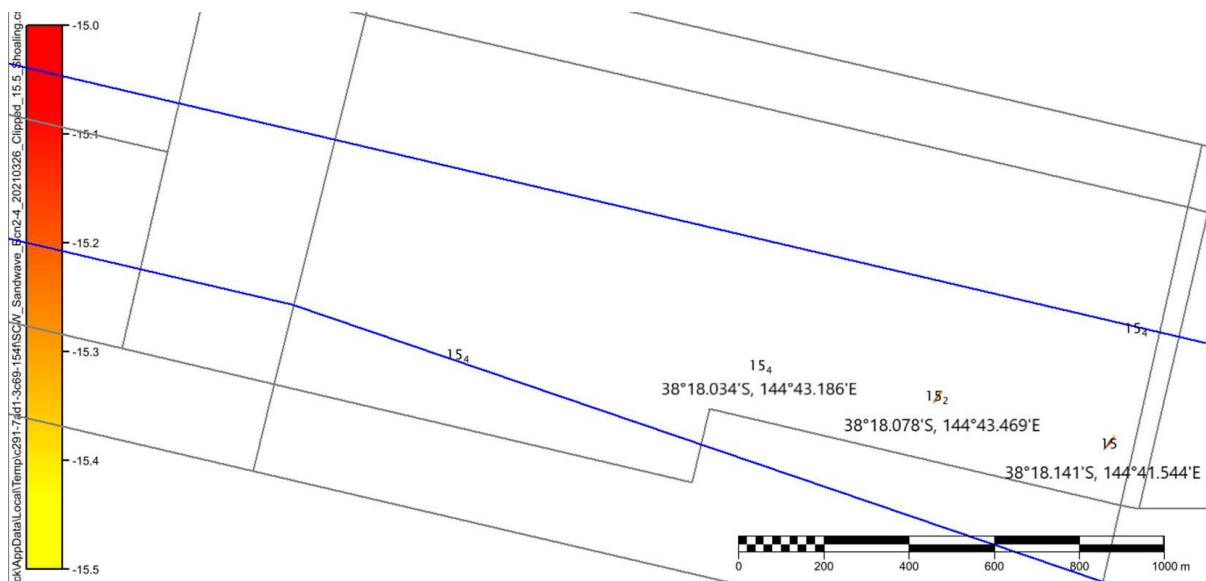
Lat: 38deg 18.141'S Long: 144deg 43.744'E Depth -15.0m

Lat: 38deg 18.078'S Long: 144deg 43.469'E Depth -15.2m

Lat: 38deg 18.034'S Long: 144deg 43.186'E Depth -15.4m

This notice is a direction of the Harbour Master pursuant to section 232 of the *Marine Safety Act 2010* (Vic)  
The requirements of section 232(2) have been taken into account.

Victorian Notices to Mariners can be downloaded from the Victorian Ports Corporation (Melbourne) website  
[www.vicports.vic.gov.au](http://www.vicports.vic.gov.au)



This notice is a direction of the Harbour Master pursuant to section 232 of the *Marine Safety Act 2010* (Vic)  
The requirements of section 232(2) have been taken into account.

Victorian Notices to Mariners can be downloaded from the Victorian Ports Corporation (Melbourne) website  
[www.vicports.vic.gov.au](http://www.vicports.vic.gov.au)