

## AUSTRALIA – VICTORIA

No. 235 (T) - 2021

## PORT OF MELBOURNE

### REDUCTION OF MAINTAINED DEPTHS

**Date:** 02 August 2021

**Refers:** N/a.

**Details:** Mariners are advised that a reduction in maintained depth has been Identified in the berth pocket of the following berths and Swing Basins.

**Table 3(j) Berth information, berthing and unberthing**

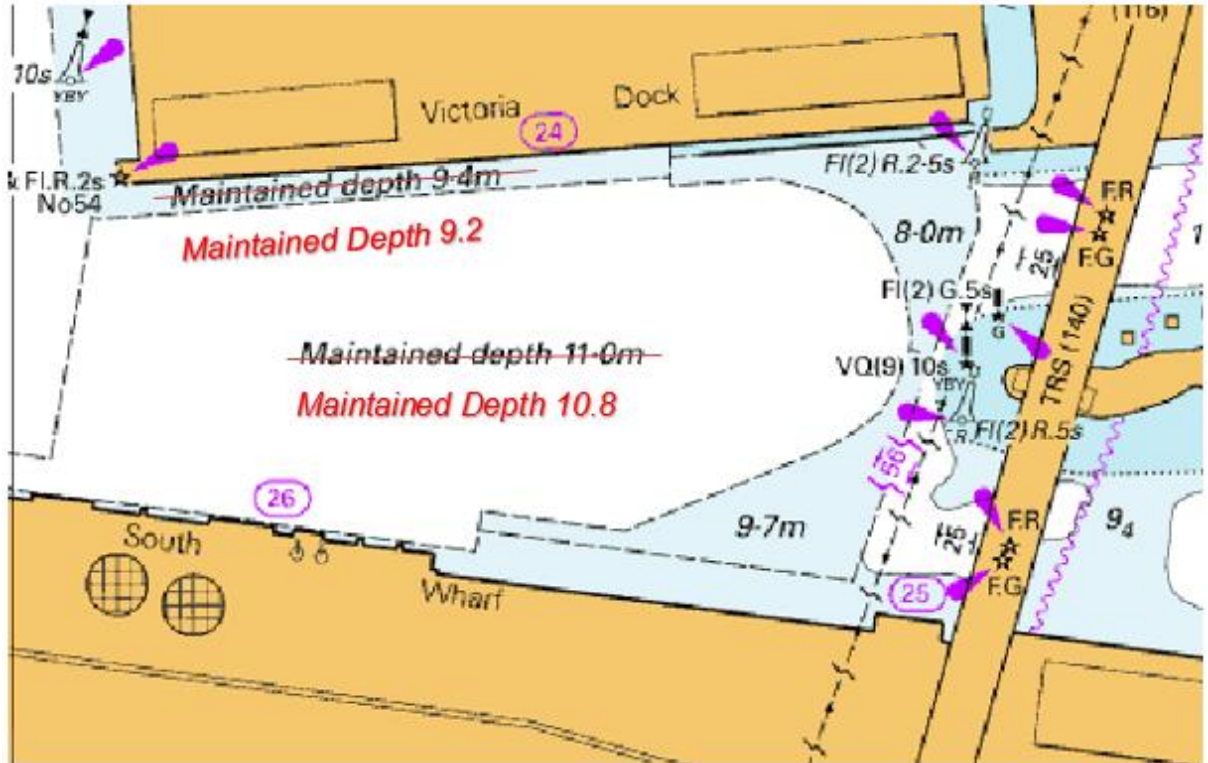
Berth		Maintained depth (m)	Ship's limits at berth (m)		Wharf height (m) above Chart Datum	General remarks
Name	Length (m)	Berth	Max. draught	Max. length		
Victoria Dock	315	9.2	8.6	250	4.0	General cargo berth; sub-leased
South Wharf 24		9.2	8.6			Not used for Shipping
South Wharf 30		8.9	8.3			Not Used for Shipping
South Wharf 31		8.4	7.8			Not used for shipping

**Table 3(k) Swinging basin dimensions Swinging basin dimensions**

Swinging basin	Diameter (m)	Maintained depth (m)	Max. draught at zero tide (m)
Appleton	3662	14.5	13.8
Vic Dock		10.8	

All vessels berthing at the above berths greater than Ship's limits at berth will have to apply for an Overdraft Permit

Further information can be obtained from Melbourne VTS on 9644 9789 or VHF channel 12.



**Charts & Publications affected:**

AUS 154, Harbours Master Direction (Table 3(j) Berth information, berthing and unberthing, and Table 3(K) Swinging basin dimensions.

**Further notice:**

Further Notice will be issued.

**Kell Dillon**

**Harbour Master**

This notice is a direction of the Harbour Master pursuant to section 232 of the *Marine Safety Act 2010* (Vic). The requirements of section 232(2) have been taken into account.

Victorian Notices to Mariners can be downloaded from the Victorian Ports Corporation (Melbourne) website [www.vicports.vic.gov.au](http://www.vicports.vic.gov.au)