

The following Notice to Mariners is published for general information

## Australia – Victoria

No. – 295 (T) - 2021

### PORT MELBOURNE REDUCTION OF MAINTAINED DEPTHS STATION PIER INNER AND OUTER EAST AND INNER WEST

**Date:** 01 October 2021

**Refers:** NtM 170 (T) / 2021 and is hereby cancelled.

**Details:** Mariners are advised that a reduction in maintained depth has been Identified in the berth pocket of the following berths.

*Table 3(j) Berth information, berthing and unberthing*

Berth		Maintained depth (m)	Ship's limits at berth (m)		Wharf height (m) above Chart Datum	General remarks
Name	Length (m)	Berth	Max. draught	Max. length		
Station Pier Inner East	220	9.9	9.3	195	3.4	Bass Strait ferry terminal
Station Pier Inner West	95	7.9	7.3	105 <sup>9</sup>	3.4	Cruise ship terminal Berthing also subject to passenger capacity and security requirements <sup>9</sup> Vessels with LOA >105 m may be accommodated on request

<b>Station Pier outer East</b>	223	10.7	10.1	240 <sup>8</sup>	3.4	Cruise ship terminal Berthing also subject to passenger capacity and security requirements <sup>8</sup> Vessels with LOA >240 m may be accommodated on request
--	-----	------	------	------------------	-----	--

Refer below Diagram

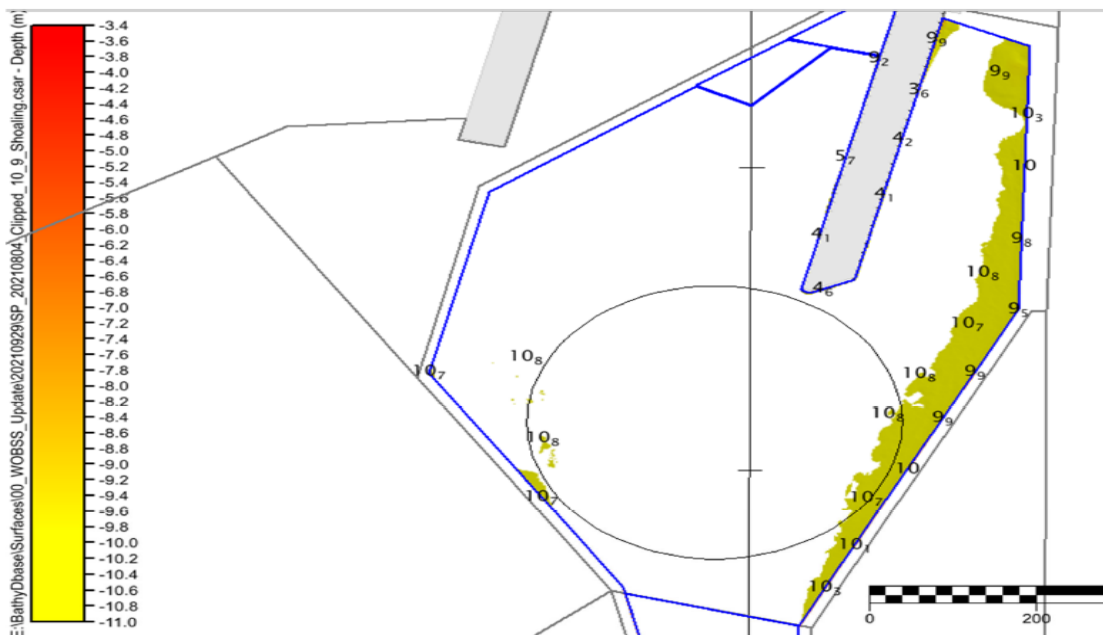
**Charts & Publications affected**

AUS 154, Harbours Master Direction (Table 3(j) Berth information, berthing and unberthing

**Further notice:** Further Notice will be issued.



**Kell Dillon  
Harbour Master**



This notice is a direction of the Harbour Master pursuant to section 232 of the *Marine Safety Act 2010* (Vic)  
The requirements of section 232(2) have been taken into account.

Victorian Notices to Mariners can be downloaded from the Victorian Ports Corporation (Melbourne) website  
[www.vicports.vic.gov.au](http://www.vicports.vic.gov.au)