

The following Notice to Mariners is published for general information

Australia – Victoria**No. – 002 (T) - 2022****PORT MELBOURNE****PORT MELBOURNE CHANNEL BEACON 14 REPLACEMENT****Date:** 07 January 2022**Refers:** Na

Details: Mariners are advised that piling operations at Port Melbourne Channel Beacon 14 in position 37°52.5' S 144°55.6' E will occur from 09 January 2022. Works will proceed during daylight hours subject to weather and are expected to be completed on or about 12 January 2022.

Virtual AIS ATON TB8 and a temporary buoy with light characteristics FI(2)R 5NM will be in this position until the works are completed.

The following vessels will be in attendance to support installation works:

- Shine – Transport of Ladder
- MV LOBO – Crew transfer
- DSV Matilda Mae – Dive support vessel
- Taree – Crane Supply Barge
- JUB II – Jack up Barge / Piling Barge
- Taurus – Assist Tug

Mariners are advised that during piling operations, a 100m no wake temporary exclusion zone will be established in position 37° 52.5' S 144° 55.6'E. Authorised vessels of the operations are excepted.

For further information, please contact Melbourne Vessel Traffic Service on VHF Channel 12 or 9644 9700.

Mariners are advised to navigate with minimum wash in the vicinity of the work.

**Charts &
Publications
affected** AUS 143, 154, 155

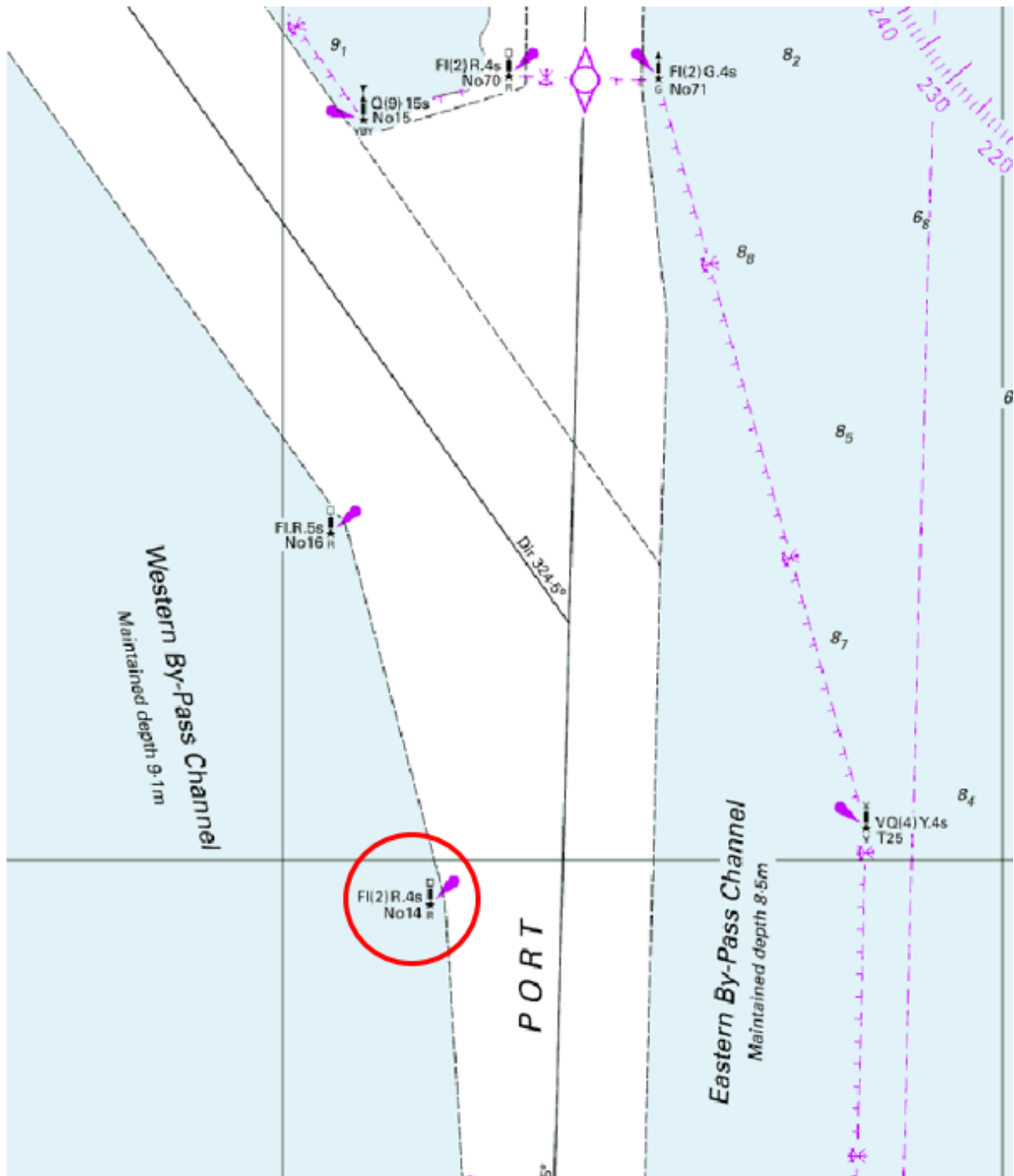
Further notice: Further Notice will be issued



**Warwick Laing
Deputy Harbour Master**

This notice is a direction of the Harbour Master pursuant to section 232 of the *Marine Safety Act 2010* (Vic)
The requirements of section 232(2) have been taken into account.

Victorian Notices to Mariners can be downloaded from the Victorian Ports Corporation (Melbourne) website
www.vicports.vic.gov.au



NOT FOR NAVIGATIONAL USE

This notice is a direction of the Harbour Master pursuant to section 232 of the *Marine Safety Act 2010* (Vic)
 The requirements of section 232(2) have been taken into account.

Victorian Notices to Mariners can be downloaded from the Victorian Ports Corporation (Melbourne) website
www.vicports.vic.gov.au