

The following Notice to Mariners is published for general information

Australia – Victoria

No. – 155 (T) - 2021

PORT OF MELBOURNE APPLETON BERTHS AND VICTORIA DOCK GEOTECHNICAL INVESTIGATION WORKS

Date: 28 April 2022

Refers: NA.

Details: Mariners are advised that geotechnical investigation works, will be conducted at the Appleton berths A – E and Victoria Dock berth pocket areas from 30 April until approximately 31 July 2022.

The barge Sealift 10, supported by the work boat Sea Punt SP5 will take core samples from 18 locations within the Appleton berths A – E and Victoria Dock berth pocket areas (see picture below). Works will take place during daylight hours around shipping, with the barge remaining on site overnight displaying anchor lights.

- Sealift 10 Jack up barge
- CPT and Drilling Rigs
- Land based 65T Crane at VICT Dock 23.

The works supervisor is contactable by mobile :0407 757 474 or 0457 865 921
And the Sealift 10 will maintain a listening watch on VHF Ch 12 and 16.

Mariners are advised to navigate with caution when in the vicinity of the works.

For more information, contact Melbourne VTS on 9644 9700.

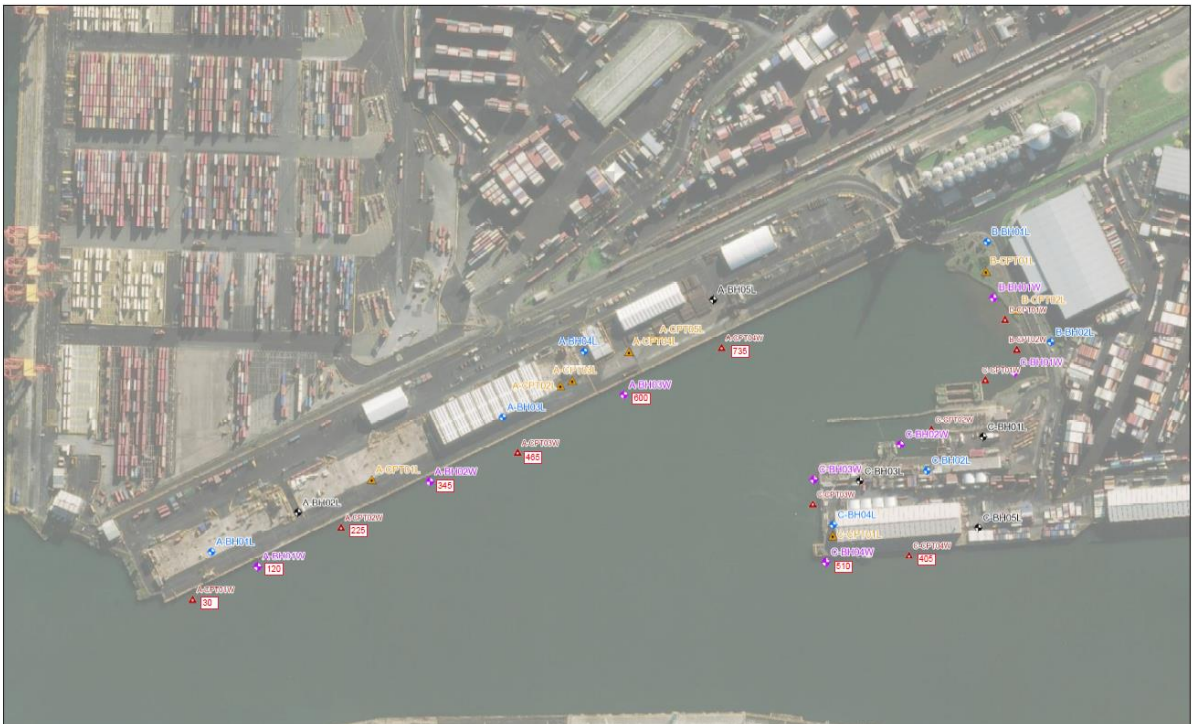
**Charts &
Publications
affected**

ENC AU5MEL01

Further notice: Further Notice will be issued

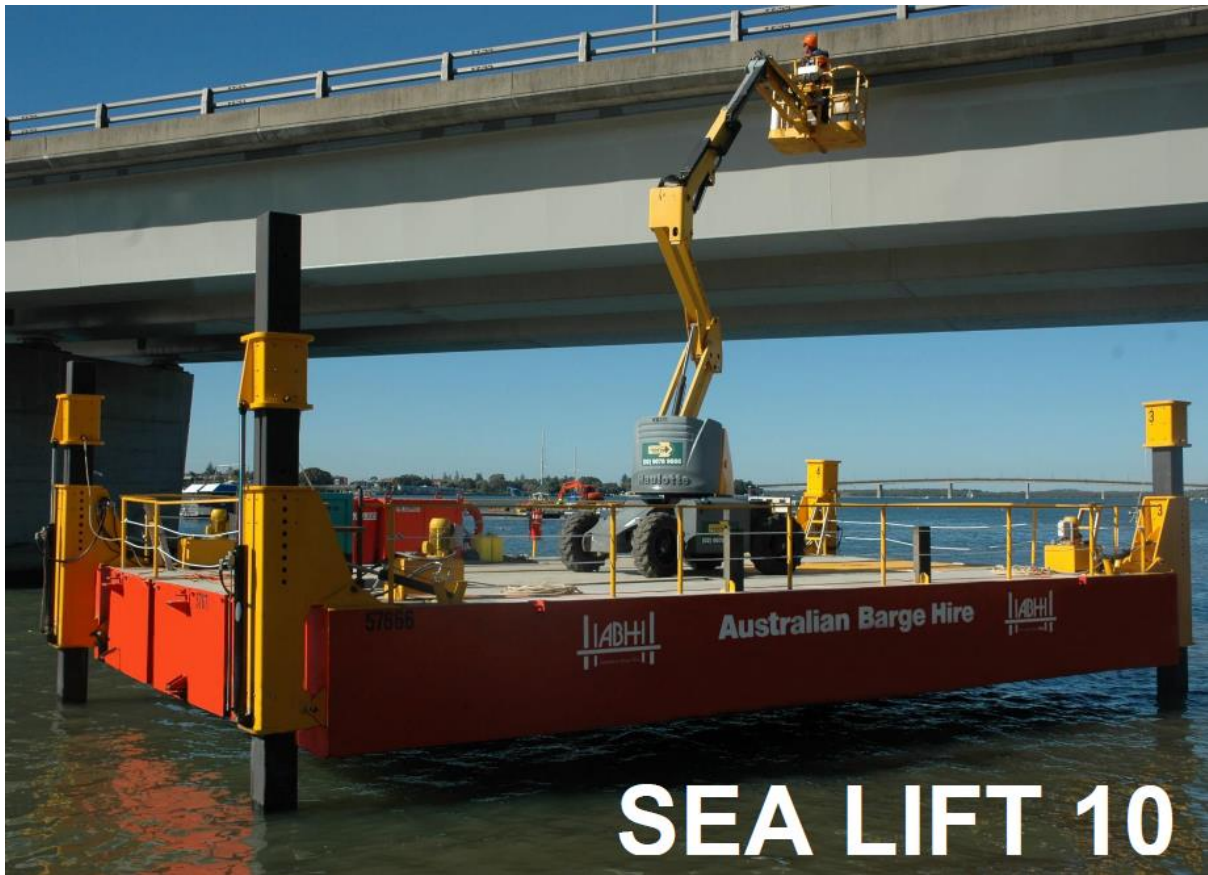


Warwick Laing
Deputy Harbour Master



This notice is a direction of the Harbour Master pursuant to section 232 of the *Marine Safety Act 2010* (Vic)
The requirements of section 232(2) have been taken into account.

Victorian Notices to Mariners can be downloaded from the Victorian Ports Corporation (Melbourne) website
www.vicports.vic.gov.au



This notice is a direction of the Harbour Master pursuant to section 232 of the *Marine Safety Act 2010* (Vic)
The requirements of section 232(2) have been taken into account.

Victorian Notices to Mariners can be downloaded from the Victorian Ports Corporation (Melbourne) website
www.vicports.vic.gov.au