

## Australia – Victoria

No. – 207 (T) - 2022

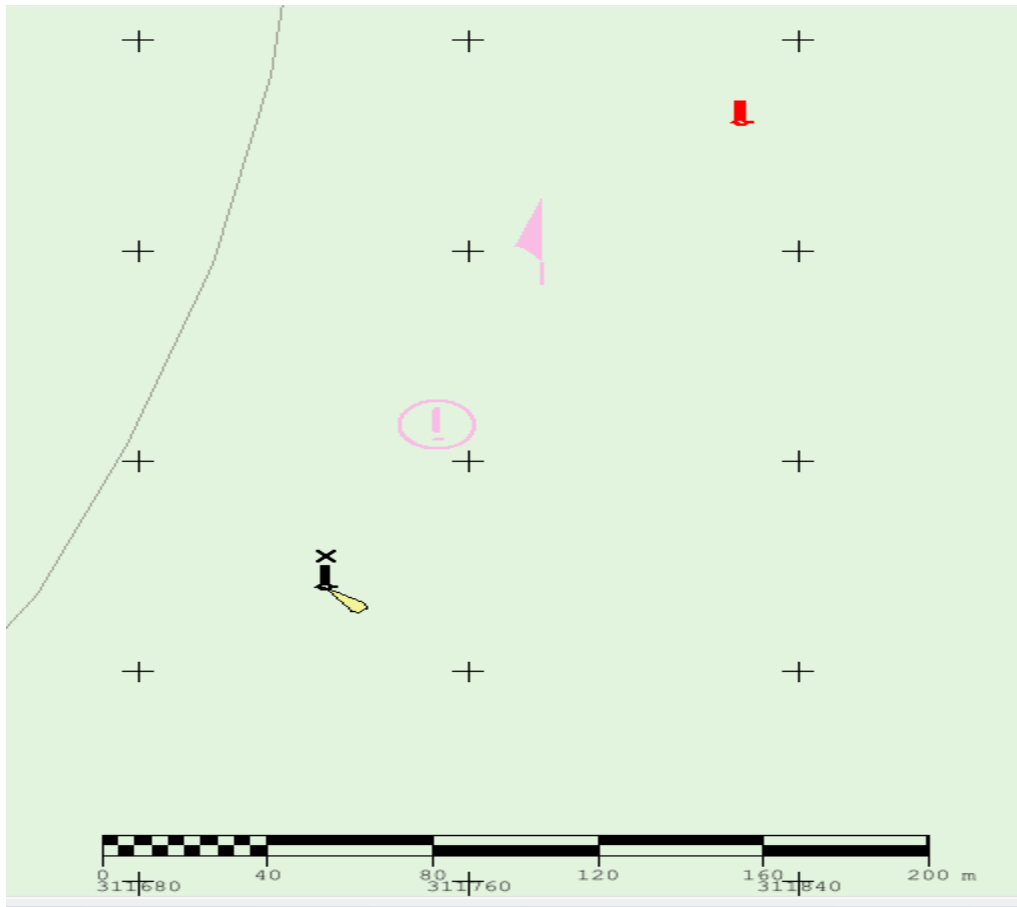
PORT MELBOURNE OUTER ANCHORAGE  
BEACON CHARTED INCORRECTLY**Date:** 01 June 2022**Refers:** NA.**Details:** Mariners are advised that, Outer Anchorage Beacon in position 37° 57.008' S 144° 51.429' E is charted incorrectly.

The beacon is lying immediately to the northeast of its present charted position

The image below shows the currently charted ENC position in “**Black**”, and the position of the same beacon as surveyed in “**Red**”.

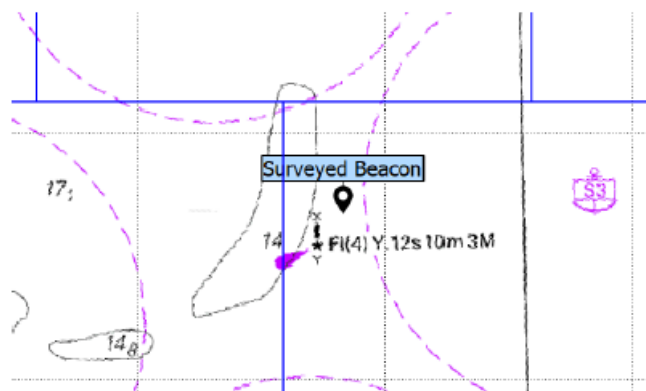
Buoy	Characteristic	Actual Position
Yellow Beacon	Fl (4) .12s 10m 3M	37° 56'.914 S 144° 51' .500”.

**Charts &  
Publications  
affected** ENC AU5MEL01**Further  
notice:** No further Notice will be issued**Warwick Laing  
Harbour Master**



Location:

	Easting	Northing
ENC	311721.80	5797554.07
Surveyed	311826.02	5797728.86
Diff	-104.22	-174.79



This notice is a direction of the Harbour Master pursuant to section 232 of the *Marine Safety Act 2010* (Vic)  
 The requirements of section 232(2) have been taken into account.

Victorian Notices to Mariners can be downloaded from the Victorian Ports Corporation (Melbourne) website  
[www.vicports.vic.gov.au](http://www.vicports.vic.gov.au)



This notice is a direction of the Harbour Master pursuant to section 232 of the *Marine Safety Act 2010* (Vic)  
The requirements of section 232(2) have been taken into account.

---

Victorian Notices to Mariners can be downloaded from the Victorian Ports Corporation (Melbourne) website  
[www.vicports.vic.gov.au](http://www.vicports.vic.gov.au)