

Australia – Victoria
No. 265(T) - 2022
PORT MELBOURNE
PORT PHILLIP - SOUTH CHANNEL – SHOAL AREA –
TEMPORARY VIRTUAL AID TO NAVIGATION TB4 RELOCATED

Date: 01 August 2022

Refers: NtM 122 (T) – 2021 is hereby amended

Details: Mariners are advised that recent surveys in the South Channel have identified areas of shoaling which is marked by a virtual buoy in the following location

Identification Message –TB4

Established in position – TB4 -38° 18.0150S, 144° 43.0790E

The virtual buoy TB4 has been relocated further west to mark the current shoaling. Deep draught vessels with a draught greater than 13.5m are advised to pass to the South or to the North of TB4

Mariners are advised to navigate with caution in the vicinity of the virtual buoy.

For further information, please contact Melbourne Vessel Traffic Service on VHF Channel 12 or 9644 9700.

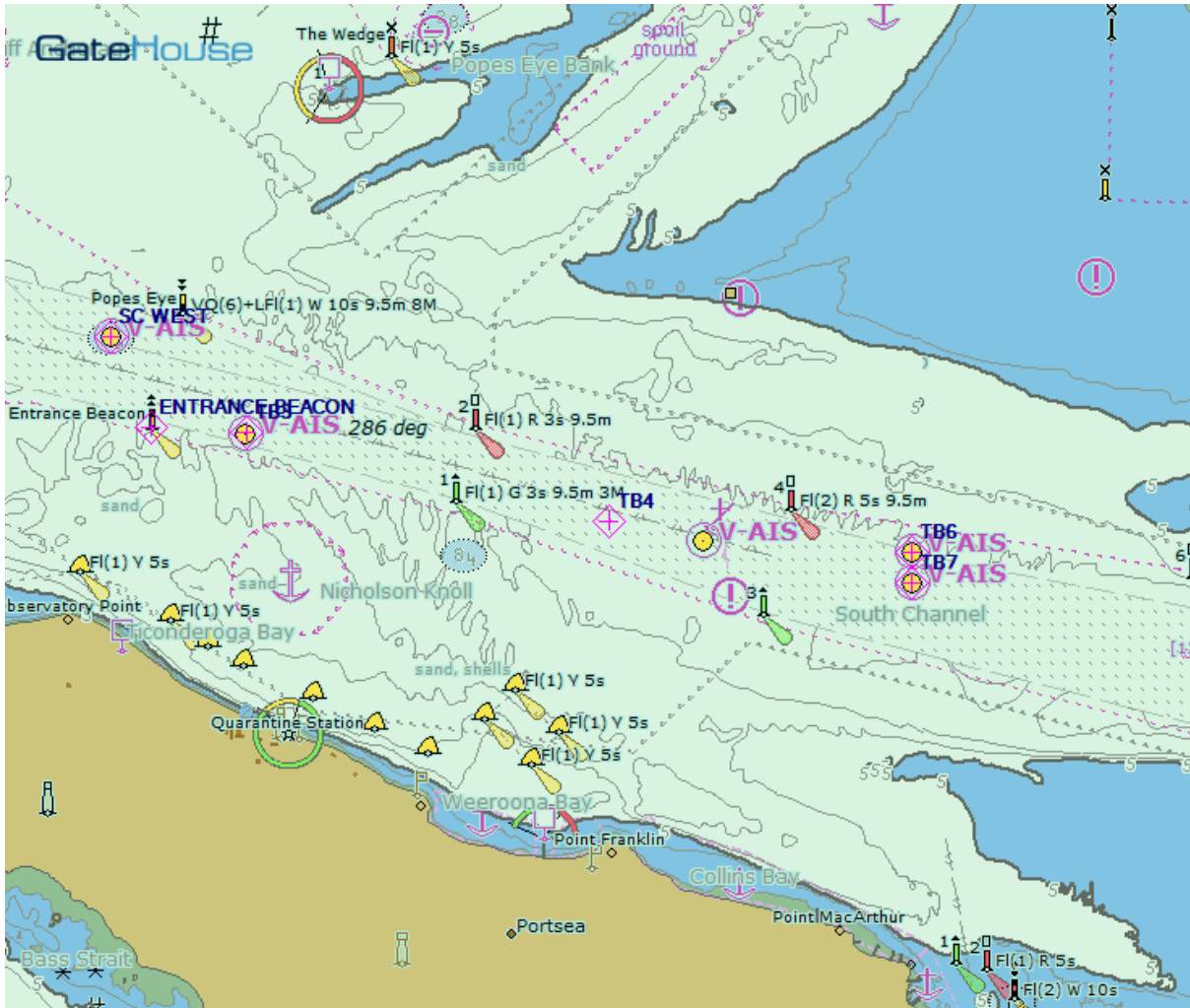
**Charts &
Publications
affected**

AUS 143, AUS 144, AUS 158
(ENC Cell Number) - AU 5144, AU 438144, AU 439144 respectively

Further notice: A further Notice will be issued



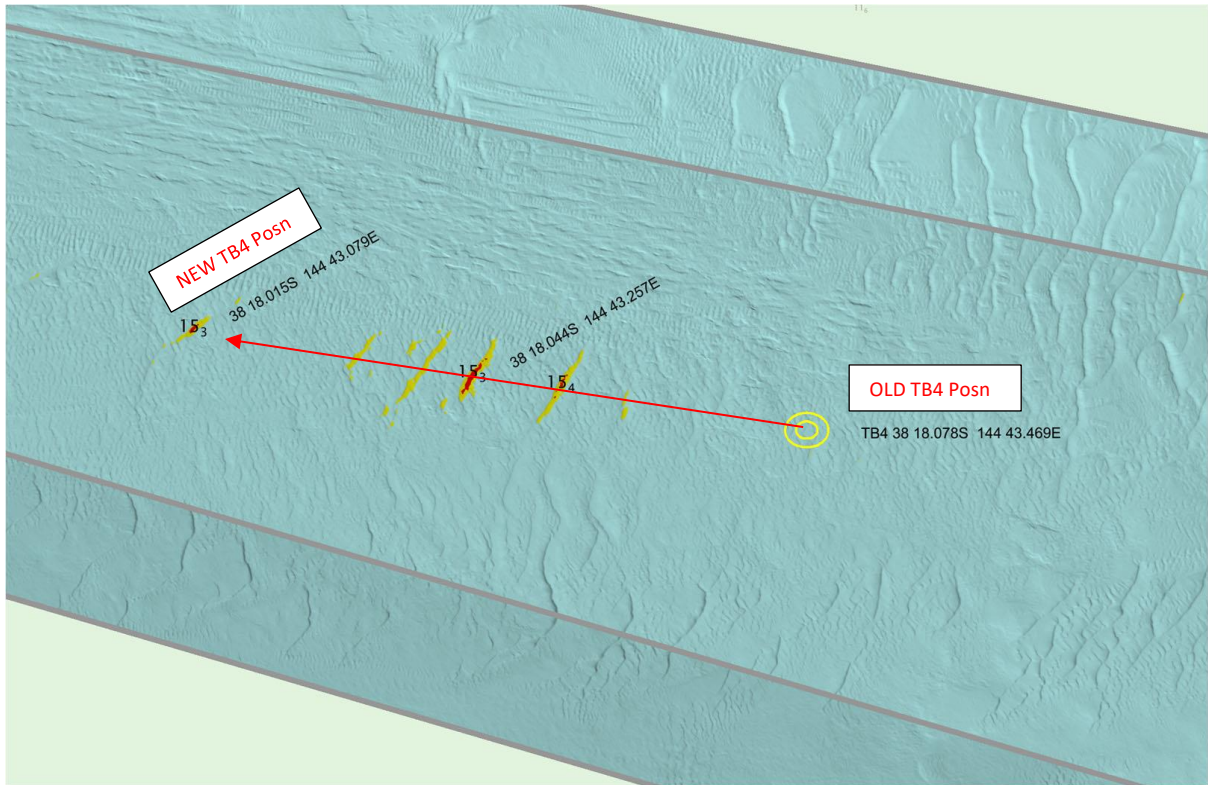
Warwick Laing
Harbour Master



TB4 relocated

This notice is a direction of the Harbour Master pursuant to section 232 of the *Marine Safety Act 2010* (Vic)
 The requirements of section 232(2) have been taken into account.

Victorian Notices to Mariners can be downloaded from the Victorian Ports Corporation (Melbourne) website
www.vicports.vic.gov.au



This notice is a direction of the Harbour Master pursuant to section 232 of the *Marine Safety Act 2010* (Vic)
The requirements of section 232(2) have been taken into account.

Victorian Notices to Mariners can be downloaded from the Victorian Ports Corporation (Melbourne) website
www.vicports.vic.gov.au