

Australia – Victoria

No. 309 (T) - 2022

PORT OF MELBOURNE

PORT PHILLIP - SOUTH CHANNEL – SHOAL AREA –  
TEMPORARY VIRTUAL AIDS TO NAVIGATION LOCATIONS TB3 AND TB4

**Date:** 15 September 2022

**Refers:** NtM 122 (T) – 2021 is hereby cancelled  
NtM 265 (T) – 2022 is hereby cancelled

**Details:** Mariners are advised that surveys in the South Channel have identified areas of shoaling which are marked by virtual buoys in the following locations:

Identification message –**TB3** and **TB4**

Established in position - **TB3:** 38° 17 .721S, 144° 41.544E  
**TB4:** 38° 18 .015S, 144° 43.079E

The virtual buoys **TB3** and **TB4** have been established to mark the current shoaling. Deep draught vessels with a draught greater than 13.5m are advised to pass north of **TB3** and either to the north or south of **TB4**.

**Mariners on deep draught vessels are advised to navigate with caution in the vicinity of the virtual buoys.**

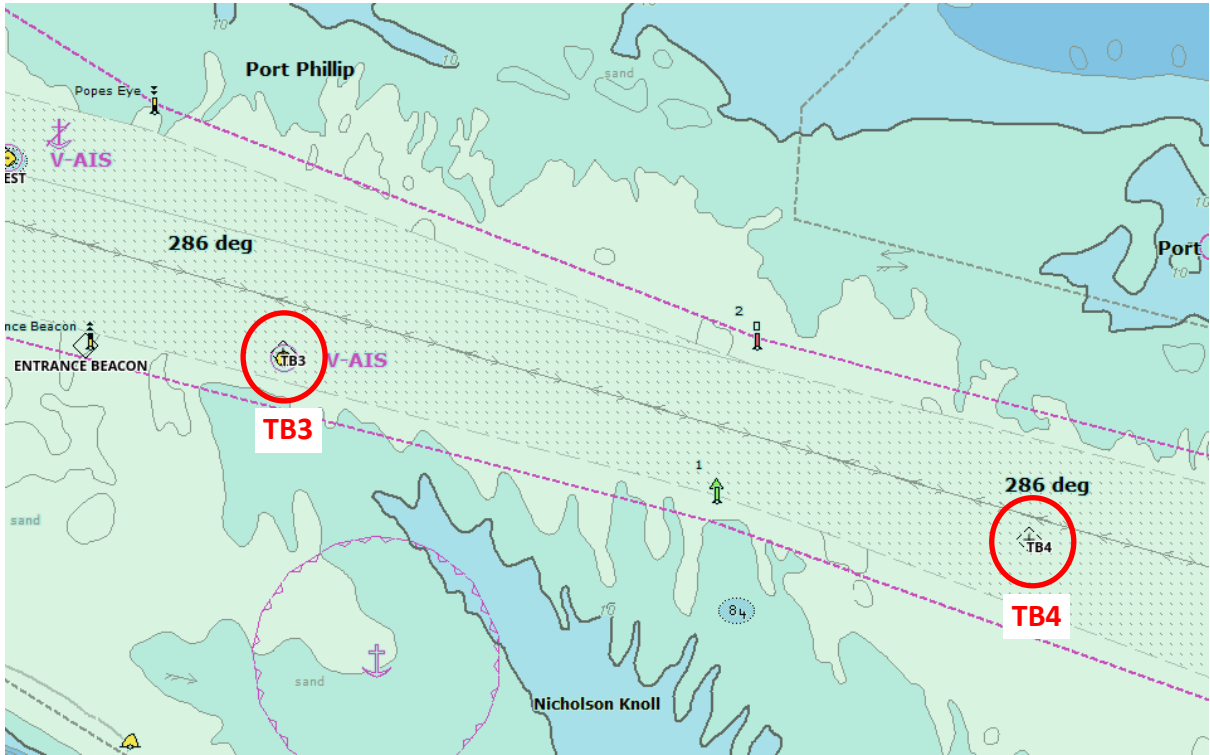
For further information, please contact Melbourne Vessel Traffic Service on VHF Channel 12 or 9644 9700.

**Charts & Publications affected** AUS 143, AUS 144  
(ENC Cell Number) – AU5RIP01, AU439144

**Further notice:** A further notice will be issued



**Warwick Laing**  
Harbour Master



**TB3 and TB4 locations in South Channel**

This notice is a direction of the Harbour Master pursuant to section 232 of the *Marine Safety Act 2010* (Vic)  
The requirements of section 232(2) have been taken into account.

Victorian Notices to Mariners can be downloaded from the Victorian Ports Corporation (Melbourne) website  
[www.vicports.vic.gov.au](http://www.vicports.vic.gov.au)