

Australia – Victoria

No. 320 (T) - 2022

PORT OF MELBOURNE

PORT PHILLIP - SOUTH CHANNEL - SHOAL AREA

TEMPORARY VIRTUAL AID TO NAVIGATION LOCATION TB5 (AMENDED)

**Date:** 23 September 2022

**Refers:** NtM 092 (T) - 2021 and is here by cancelled

**Details:** Mariners are advised that surveys in the South Channel have identified areas of shoaling which are marked by a virtual buoy in the following location:

Identification message – **TB5**

Established in position - 38° 19 .054S, 144° 48.633E

The virtual buoy **TB5** has been established to mark the current shoaling depth of 15m. Deep draught vessels with a draught greater than 13.5m are advised to pass south of **TB5**.

**Mariners on deep draught vessels are advised to navigate with caution in the vicinity of the virtual buoy.**

For further information, please contact Melbourne VTS on VHF Channel 12 or 9644 9700.

**Charts &  
Publications  
affected**

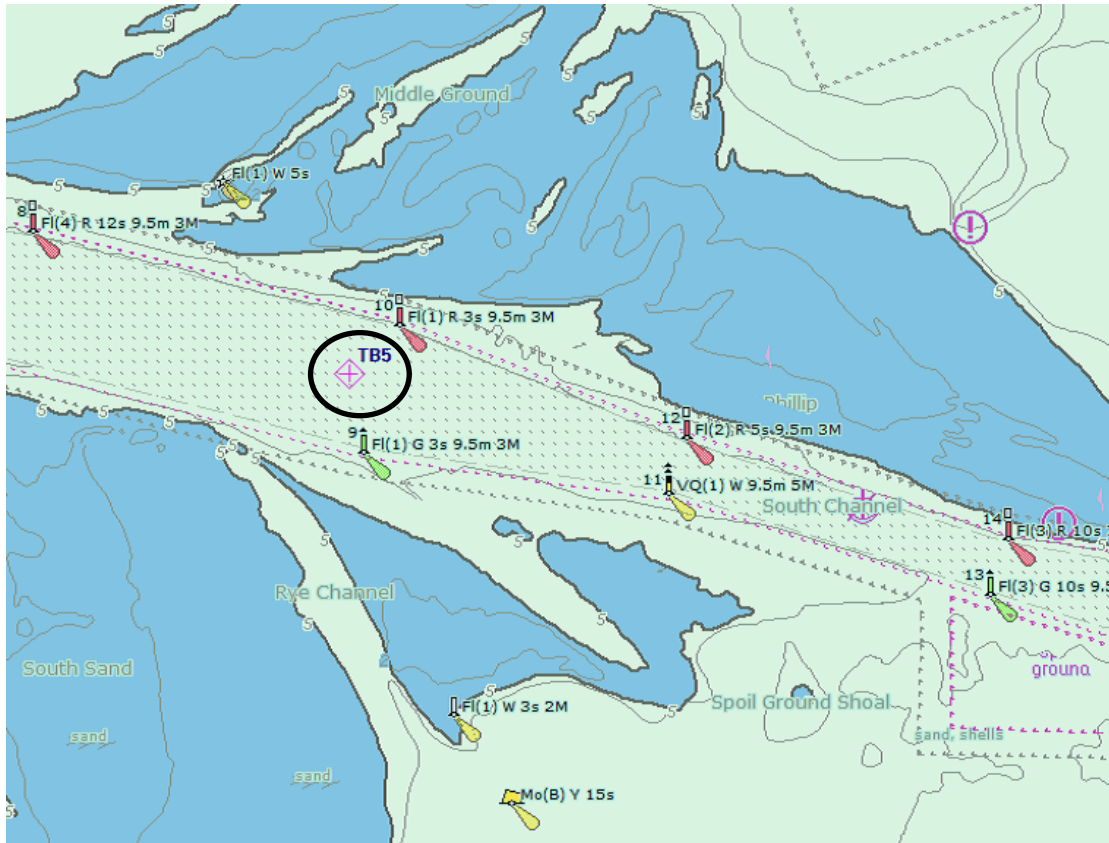
AUS 143, AUS 144  
(ENC Cell Number) – AU5RIP01, AU439144

**Further notice:** A further notice will be issued

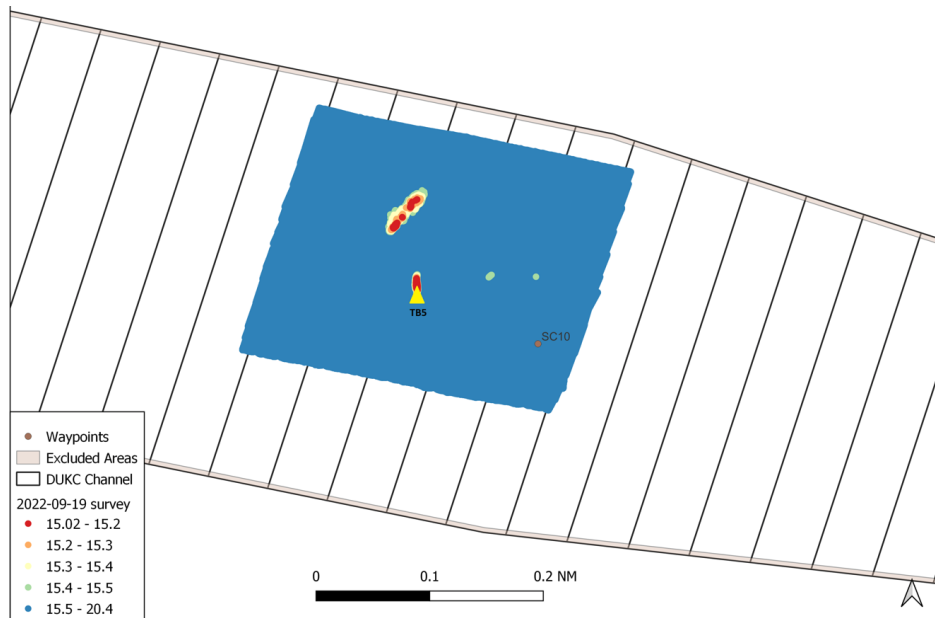


**Warwick Laing**  
Harbour Master

**TB5 location in South Channel**



**TB5 location in South Channel showing extent of shoaling in red**



This notice is a direction of the Harbour Master pursuant to section 232 of the *Marine Safety Act 2010* (Vic)  
 The requirements of section 232(2) have been taken into account.

Victorian Notices to Mariners can be downloaded from the Victorian Ports Corporation (Melbourne) website  
[www.vicports.vic.gov.au](http://www.vicports.vic.gov.au)