

The following Notice to Mariners is published for general information

Australia – Victoria

No. 366 (T) - 2022

**PORT OF MELBOURNE
MARIBYRNONG NO. 1 BERTH OPEN
REDECLARED MAINTAINED DEPTH**

Date: 25 October 2022

Refers: NtM 354 (T) / 2022 and is hereby cancelled.
NtM 364 (T) / 2022 and is hereby cancelled.

Details: Mariners are advised that from recent sweeping works, the maintained depth has been redeclared in the berth pocket of Maribyrnong No. 1 and the berth is now open to vessels.

3.15 Berth information, berthing and unberthing - Table 3(j) – Harbour Master’s Directions – Melbourne Edition 13 – amended as follows:

Berth		Maintained depth (m)	Ship’s limits at berth (m)		Wharf height (m) above Chart Datum	General remarks
Name	Length (m)	Berth	Max. draught	Max. length		
Maribyrnong No.1	-	9.3	8.7	180	2.9	Bulk Liquid Terminal Head out Only Vessels with beam >25m require permit Maximum displacement 40,000t.

For further information, please contact Melbourne VTS on (03) 9644 9700 or on VHF Channel 12.

Charts & Publications affected Harbour Master's Directions - Melbourne Edition 13, September 2022
ENC AU5MEL01

Further notice: Further notice will be issued.

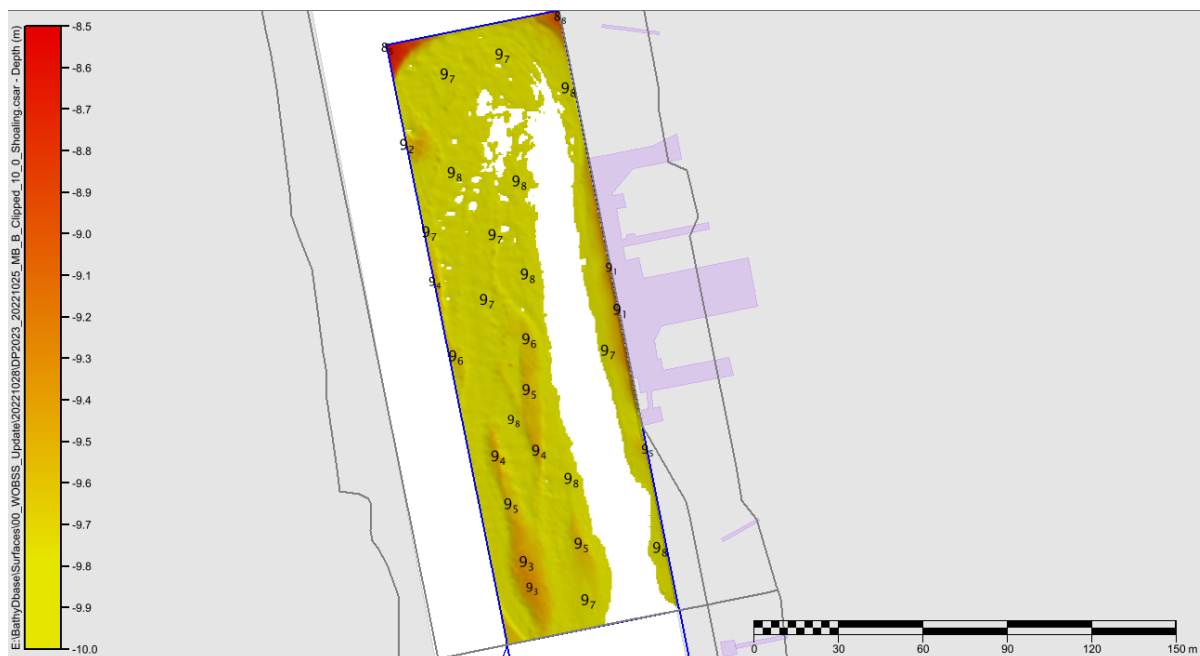


David Tilsley
Deputy Harbour Master
(Navigation Services)

This notice is a direction of the Harbour Master pursuant to section 232 of the *Marine Safety Act 2010* (Vic)
The requirements of section 232(2) have been taken into account.

Victorian Notices to Mariners can be downloaded from the Victorian Ports Corporation (Melbourne) website
www.vicports.vic.gov.au

Survey image with soundings of Maribyrnong No. 1 berth



This notice is a direction of the Harbour Master pursuant to section 232 of the *Marine Safety Act 2010* (Vic)
The requirements of section 232(2) have been taken into account.

Victorian Notices to Mariners can be downloaded from the Victorian Ports Corporation (Melbourne) website
www.vicports.vic.gov.au