

The following Notice to Mariners is published for general information

Australia – Victoria

No. 044 (T) - 2023

**PORT OF MELBOURNE
PORT MELBOURNE CHANNEL-SOUTH
REDUCTION IN MAINTAINED DEPTH**

Date: 25 January 2023

Refers: N/A

Details: Mariners are advised that a reduction in maintained depth has been declared for the Port Melbourne Channel-South.

3.8. Under keel clearance - Table 3(f) Minimum permissible UKC for vessels with draughts less than 11.6 m - **Harbour Master's Directions – Melbourne Edition 13 – amended as follows:**

Channel reach	General description	Maintained depth (m)	Minimum UKC (m)	Maximum draught at zero tide (m) ¹
Port Melbourne Channel-South	From Port Melbourne Channel Entrance Beacons E1 and E2 to Williamstown Channel-Port Melbourne Channel junction	15.2	1.5	No restriction ²

¹ To determine the actual maximum permissible draught, tide height above or below the Chart Datum will need to be incorporated, and the values in this column are given for example purposes only. Note that if there is a negative tide height the maximum permissible draught will need to be reduced accordingly.

² There is no restriction on a vessel which has a draught of less than 11.6 m in these channels except when the tide falls below the Chart Datum

For more information, please contact Melbourne VTS on (03) 9644 9700 or on VHF Channel 12.

**Charts &
Publications
affected**

Harbour Master's Directions - Melbourne Edition 13, September 2022

AUS 155

ENC AU5MEL01

**Further
notice:**

Further notice will be issued.

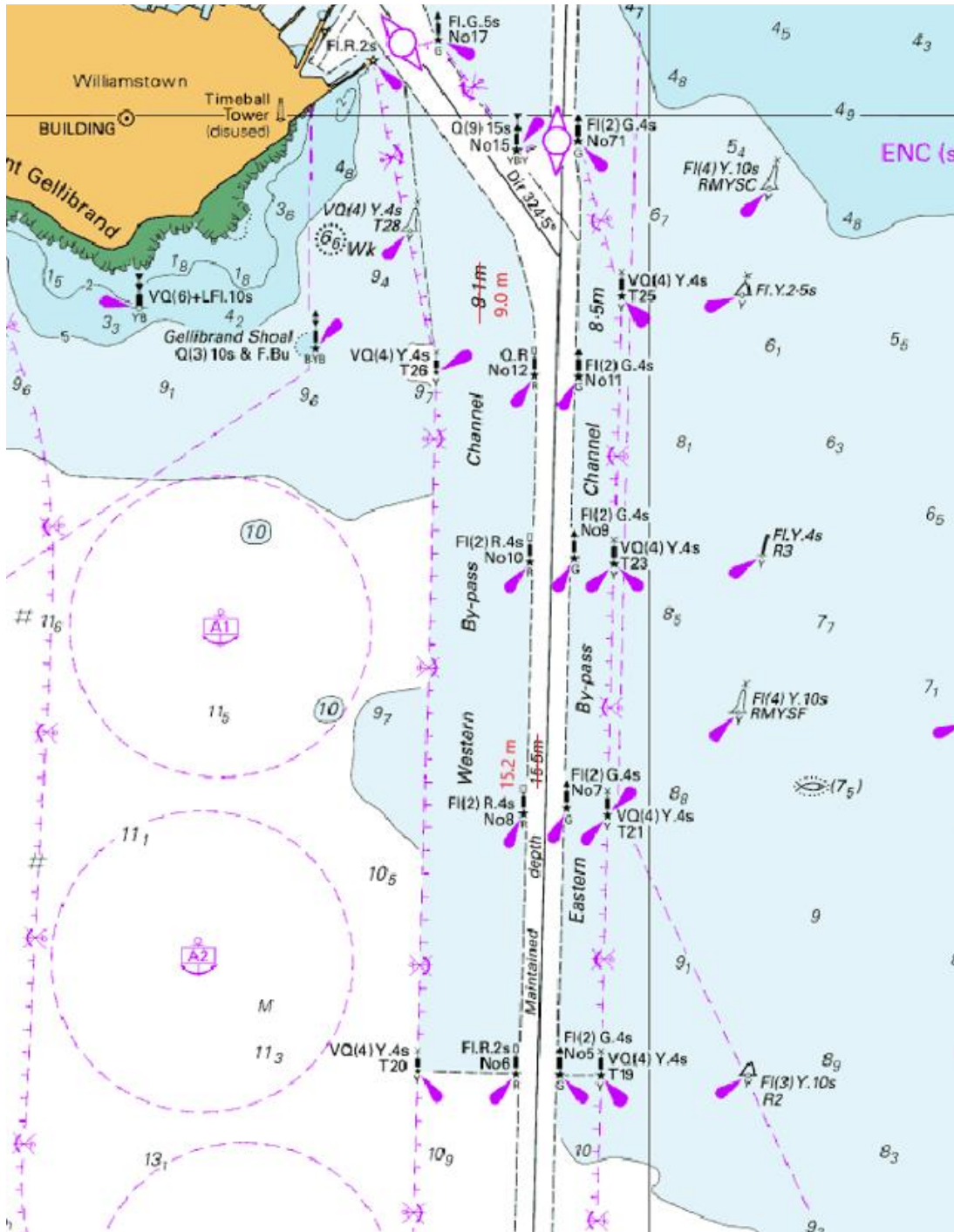


**David Tilsley
Deputy Harbour Master
(Navigation Services)**

This notice is a direction of the Harbour Master pursuant to section 232 of the *Marine Safety Act 2010* (Vic)
The requirements of section 232(2) have been taken into account.

Victorian Notices to Mariners can be downloaded from the Victorian Ports Corporation (Melbourne) website
www.vicports.vic.gov.au

Port Melbourne Channel-South – reduction in maintained depth



This notice is a direction of the Harbour Master pursuant to section 232 of the *Marine Safety Act 2010* (Vic). The requirements of section 232(2) have been taken into account.

Victorian Notices to Mariners can be downloaded from the Victorian Ports Corporation (Melbourne) website www.vicports.vic.gov.au