

## Australia – Victoria

No. 127 (P) - 2023

### PORT OF MELBOURNE EXPANDED VTS AREA VTS REPORTING AND GENERAL TRAFFIC PROCEDURES

**Date:** 17 March 2023

**Refers:** N/A

**Details:** Mariners are advised that in accordance with the Instrument of Authority issued by Australian Maritime Safety Authority, the current VTS Area will extend to an arc of a circle projecting south of radius 10 nautical miles from Point Lonsdale Lighthouse (reference attached image).

Vessels with a length overall of 50 m or greater proceeding to or from Melbourne and Geelong will be required to adhere to the following VTS reporting and general traffic procedures:

#### **Section 1 – Inbound Vessels – VTS Reporting and General Traffic Procedure**

- 1) All vessels are to send an email notification to [ArrivalNotification@ports.vic.gov.au](mailto:ArrivalNotification@ports.vic.gov.au) at least 4 hours prior to their estimated time of arrival (ETA) at the Pilot Boarding Ground (PBG). The notification details to be provided are as follows:

<b>4 hrs Notice of Arrival</b>	
Vessel name	
Maximum draught	
Maximum air draught	
ETA PBG (DD/XXXX-LT)	
Maximum ahead service speed	
Bow thruster working - Y/N/NA	
Stern thruster working - Y/N/NA	
HPR rudder - Y/N/NA	
Any defects	
Remarks (if any)	

Should a vessel be unable to transmit the arrival notification by email, please contact the vessel's appointed agent or Lonsdale VTS on VHF Ch 12 or call +61 3 5258 1252.

- 2) 1 hour before ETA to PBG, inbound vessel to report to Lonsdale VTS on VHF Channel 12. Lonsdale VTS will provide the following information:
  - a) Estimated time for pilot boarding
  - b) Assign a sequence number for entry
  - c) Pilot ladder instructions for the vessel
  - d) Confirm vessel's maximum draught
- 3) Inbound vessels from sea should proceed to Reporting Point **India (38° 26'.90 S 144° 32'.60 E)**:
  - a) Report to Lonsdale VTS on VHF Ch 12 to seek permission to enter the VTS Area at Reporting Point **India** on the inbound recommended route and provide vessel's approach speed.
- 4) Vessels approaching the PBG Precautionary Area on the inbound recommended route must maintain at least 15 minutes or 2 nautical miles separation (whichever is greater) from vessels engaged in embarking or disembarking a Pilot.
- 5) When proceeding on the inbound recommended route to the PBG, Pilot boarding instructions will be provided by the vessel's Pilot Service Provider (Pilot Launch) on the nominated VHF Channel (as advised by Lonsdale VTS).
- 6) Upon Pilot boarding, all further vessel reporting requirements to Lonsdale VTS and Melbourne VTS are as per existing vessel reporting requirements within *Harbour Master's Directions – Port of Melbourne*.

#### Notes

- The inbound recommended route applies only to vessels requiring pilotage and does not apply to coastal vessels operating with Pilot Exempt Masters.

This notice is a direction of the Harbour Master pursuant to section 232 of the *Marine Safety Act 2010* (Vic)  
The requirements of section 232(2) have been taken into account.

---

Victorian Notices to Mariners can be downloaded from the Victorian Ports Corporation (Melbourne) website  
[www.vicports.vic.gov.au](http://www.vicports.vic.gov.au)

- Vessels should not approach or enter the VTS Area for the purpose of tendering a notice of readiness (NOR).
- Vessels intending to drift outside the VTS Area should remain **at least 5 nautical miles clear of the VTS Area.**

### **Section 2 – Outbound Vessels – VTS Reporting and General Traffic Procedure**

- 1) All vessel reporting requirements to Lonsdale VTS prior to Hovell Approach are as per existing vessel reporting requirements within *Harbour Master's Directions – Port of Melbourne*.
- 2) Report to Lonsdale VTS on VHF Ch 12 on passing Hovell Approach (2 nautical miles north of Beacons 24 and 25) when proceeding to sea of the following:
  - a) Confirm maximum draught
  - b) Confirm ETA to Port Phillip Heads (Heads)
  - c) Confirm if vessel requires one-way transit of the Heads or is a low powered vessel
  - d) Confirm if vessel will be constrained to the Great Ship Channel
  - e) Advise the vessel's intended route, including the shipping channel to be used to transit the Heads
  - f) Request permission to enter South Channel
- 3) Report to Lonsdale VTS on VHF Ch 12 on passing South Channel Beacon 6 proceeding to sea advising of the following:
  - a) Passing reporting point
  - b) Confirm outbound exit channel
  - c) Pilot ladder side
- 4) When two outbound vessels are proceeding to the PBG, the second outbound vessel must maintain at least 15 minutes or 2 nautical miles separation (whichever is greater) from the vessel ahead disembarking a Pilot.

This notice is a direction of the Harbour Master pursuant to section 232 of the *Marine Safety Act 2010* (Vic)  
The requirements of section 232(2) have been taken into account.

- 5) Report to Lonsdale VTS on VHF Ch 12 when 3 nautical miles from Point Lonsdale leaving Port Limits proceeding to sea of the following:
  - a) Confirm vessel will transit in the direction of the outbound recommended route from PBG to Reporting Point **Oscar**.
- 6) Pilot disembarkation will take place within the PBG Precautionary Area. Any Pilot intending to disembark outside of the PBG Precautionary Area due to prevailing environmental conditions must report these intentions to Lonsdale VTS.
- 7) Recommended route for **outbound vessels after disembarking a Pilot**:
  - a) Outbound vessels should proceed to Reporting Point **Oscar (38° 23'.40 S 144° 26'.60 E)** from the PBG using the outbound recommended route.
- 8) Report to Lonsdale VTS on VHF Ch 12 when passing Reporting Point **Oscar** exiting the VTS Area (10 nautical miles from Point Lonsdale).

**Note**

- The outbound recommended route applies only to vessels that have disembarked a Pilot and does not apply to coastal vessels operating with Pilot Exempt Masters.

**Section 3 – Coastal Vessels – VTS Reporting and General Traffic Procedure**

- 1) Coastal vessel means a vessel with a Safe Transport Victoria approved Pilot Exempt Master.
- 2) The inbound and outbound recommended routes for the PBG apply only to vessels requiring pilotage and do not apply to coastal vessels with a Pilot Exempt Master. However, should a coastal vessel wish to use the recommended routes or require pilotage, the inbound and outbound recommended routes and reporting requirements within Section 1 and 2 will apply.

This notice is a direction of the Harbour Master pursuant to section 232 of the *Marine Safety Act 2010* (Vic)  
The requirements of section 232(2) have been taken into account.

---

Victorian Notices to Mariners can be downloaded from the Victorian Ports Corporation (Melbourne) website  
[www.vicports.vic.gov.au](http://www.vicports.vic.gov.au)

- 3) Coastal vessels must not impede the passage of other inbound and outbound vessels within the VTS Area.
- 4) **Inbound coastal vessels** must:
  - a) Report to Lonsdale VTS on VHF Ch 12 at least 2 hours prior to their estimated time of arrival (ETA) at Port Limits advising of the following:
    - i) ETA to Port Limits
    - ii) Maximum draught
    - iii) Any defects or circumstances that may hamper the vessel's ability to manoeuvre
  - b) Report to Lonsdale VTS on VHF Ch 12 at VTS Area limit (10 nautical miles) to seek permission to enter the VTS Area – Lonsdale VTS will provide traffic information.
  - c) Report to Lonsdale VTS on VHF Ch 12 at Port Limits (3 nautical miles):
    - i) Seek permission to enter port limits and the Fairway Through Port Phillip Heads
    - ii) Maximum draught
    - iii) Give name of Pilot Exempt Master
    - iv) Advise the vessel's intended route, including the shipping channel to be used to transit the Heads
  - d) All further vessel reporting requirements to Lonsdale VTS and Melbourne VTS are as per existing vessel reporting requirements within *Harbour Master's Directions – Port of Melbourne*.
- 5) **Outbound coastal vessels** must report to Lonsdale VTS as follows:
  - a) All vessel reporting requirements to Lonsdale VTS prior to Hovell Approach are as per existing vessel reporting requirements within *Harbour Master's Directions – Port of Melbourne*.

This notice is a direction of the Harbour Master pursuant to section 232 of the *Marine Safety Act 2010* (Vic)  
The requirements of section 232(2) have been taken into account.

- b) Report to Lonsdale VTS on VHF Ch 12 on passing Hovell Approach (2 nautical miles north of Beacons 24 and 25) when proceeding to sea of the following:
  - i) Confirm maximum draught
  - ii) Confirm ETA to Port Phillip Heads (Heads)
  - iii) Confirm if vessel requires one-way transit of the Heads or is a low powered vessel
  - iv) Confirm if vessel will be constrained to the Great Ship Channel
  - v) Advise the vessel's intended route, including the shipping channel to be used to transit the Heads
  - vi) Request permission to enter South Channel
  
- c) Report to Lonsdale VTS on VHF Ch 12 on passing South Channel Beacon 6 proceeding to sea advising of the following:
  - i) Passing reporting point
  - ii) Confirm outbound exit channel
  
- d) Report to Lonsdale VTS on VHF Ch 12 when 3 nautical miles from Point Lonsdale leaving Port Limits proceeding to sea of the following:
  - i) Passing port limits outbound
  - ii) Confirm vessel will navigate clear of PBG Precautionary Area, recommended routes and all inbound/outbound traffic
  
- e) Report to Lonsdale VTS on VHF Ch 12 when exiting the VTS Area (10 nautical miles from Point Lonsdale).

This notice is a direction of the Harbour Master pursuant to section 232 of the *Marine Safety Act 2010* (Vic)  
The requirements of section 232(2) have been taken into account.

#### **Section 4 – Domestic Commercial Vessels – VTS Reporting and General Traffic Procedure**

- 1) Domestic commercial vessels (DCV) mean vessels which are regulated under the *Marine Safety (Domestic Commercial Vessel) National Law Act 2012*.
- 2) DCV's must keep clear of the PBG Precautionary Area and all inbound and outbound vessels within the VTS Area.
- 3) DCV's must maintain a listening watch on VHF Ch 12 and respond immediately when hailed by Lonsdale VTS.
- 4) A DCV which is 35m or greater must comply with the requirements of Section 1 and 2 of this notice.

#### **Section 5 – General Information**

This procedure will take effect from **1200 hrs on 31 March 2023**.

This procedure will be reviewed after 3 months following consultation with all affected stakeholders. Stakeholders are advised to provide any feedback and queries to [BerthAllocator@ports.vic.gov.au](mailto:BerthAllocator@ports.vic.gov.au) by COB 16 June 2023.

For more information, please contact Lonsdale VTS on 9644 9700.

#### **Charts & Publications affected**

AUS 143, AUS 144, AUS 349, AUS 487, AUS 801

ENC AU5RIP01, AU439144

Admiralty Digital Radio Signals 6 - Area 7 /Australia/ Melbourne including Port Phillip, Victoria

Harbour Master's Directions – Port of Melbourne – Edition 13 (September 2022)

Port Information Guide for the port waters of the port of Melbourne – 5<sup>th</sup> Edition (March 2022)

This notice is a direction of the Harbour Master pursuant to section 232 of the *Marine Safety Act 2010* (Vic)  
The requirements of section 232(2) have been taken into account.

---

Victorian Notices to Mariners can be downloaded from the Victorian Ports Corporation (Melbourne) website  
[www.vicports.vic.gov.au](http://www.vicports.vic.gov.au)

**Further  
notice:**

Further notice will be issued.

A handwritten signature in black ink, appearing to read 'Warwick Laing', with a long, sweeping underline.

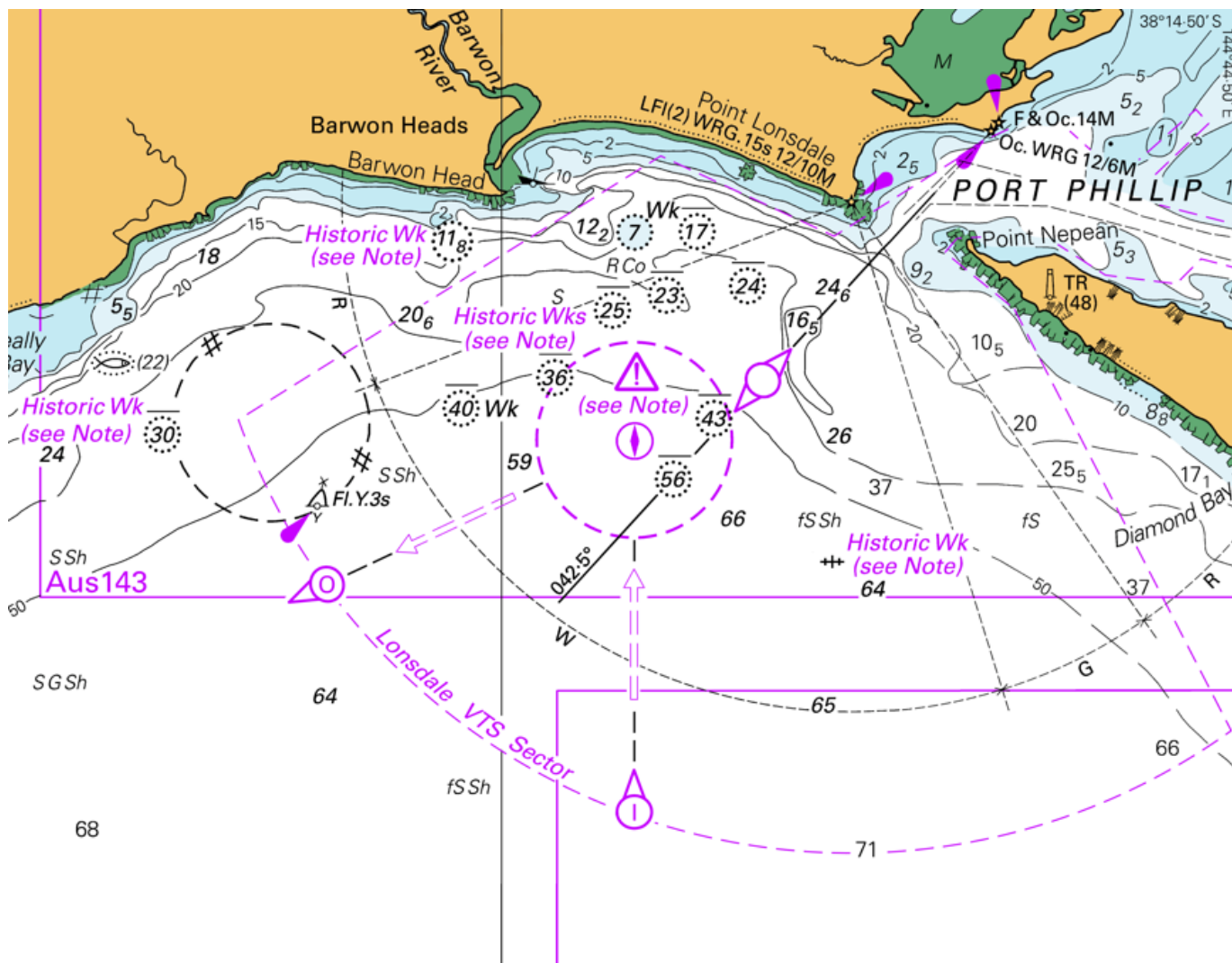
**Warwick Laing  
Harbour Master**

This notice is a direction of the Harbour Master pursuant to section 232 of the *Marine Safety Act 2010* (Vic)  
The requirements of section 232(2) have been taken into account.

---

Victorian Notices to Mariners can be downloaded from the Victorian Ports Corporation (Melbourne) website  
[www.vicports.vic.gov.au](http://www.vicports.vic.gov.au)





**Expanded Ports Victoria VTS Area**

This notice is a direction of the Harbour Master pursuant to section 232 of the *Marine Safety Act 2010* (Vic).  
The requirements of section 232(2) have been taken into account.

Ports Victoria Notices to Mariners can be downloaded from the website, [www.vicports.vic.gov.au](http://www.vicports.vic.gov.au)