

The following Notice to Mariners is published for general information

Australia – Victoria**No. 272 (T) - 2023****PORT OF MELBOURNE
SOUTH CHANNEL BEACON 10 OFF STATION****Date:** 3 July 2023**Refers:** NtM 268 (T) – 2023 and is hereby cancelled.**Details:** Mariners are advised that **South Channel Beacon 10** located in position **38° 18.874' S 144° 48.860' E** is off station.

The beacon is lying on the seafloor immediately to the north of its charted position clear of South Channel. The beacon presents an obstruction with a least depth of 12.71 metres.

A virtual aid to navigation **TB10** is established in the position of South Channel Beacon 10 until further notice.

A port hand lateral mark buoy has been deployed adjacent to South Channel Beacon 10 position, details as follows:

Buoy	Characteristic	Approximate Position
Port hand lateral mark	Fl.R.3s	38° 18.877' S 144° 48.875' E

For further information, please contact Melbourne VTS on VHF Channel 12 or call 9644 9700.

Mariners are advised to navigate with additional caution in the vicinity of South Channel Beacon 10.

**Charts &
Publications
affected** AUS 143
ENC AU5RIP01

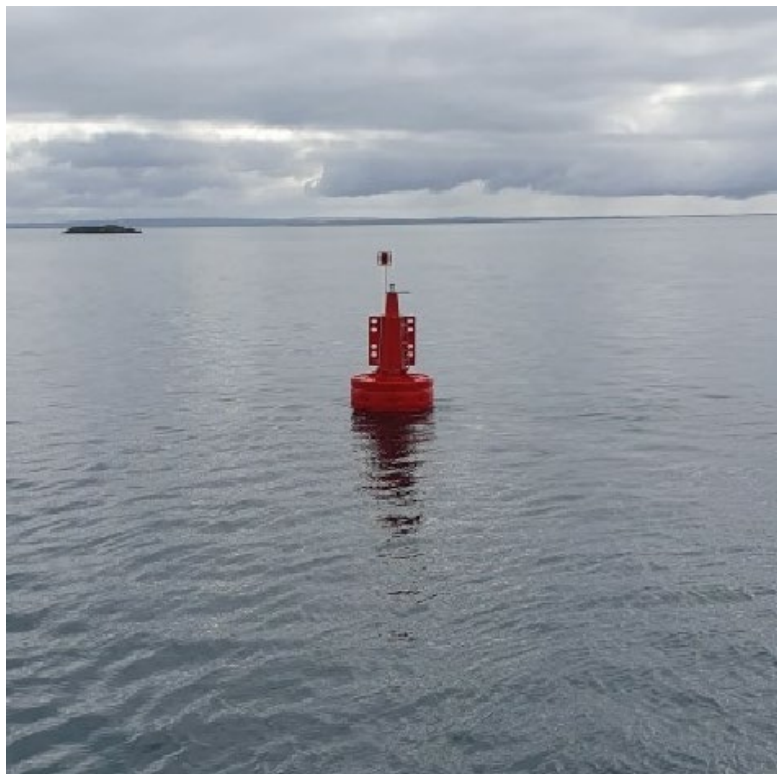
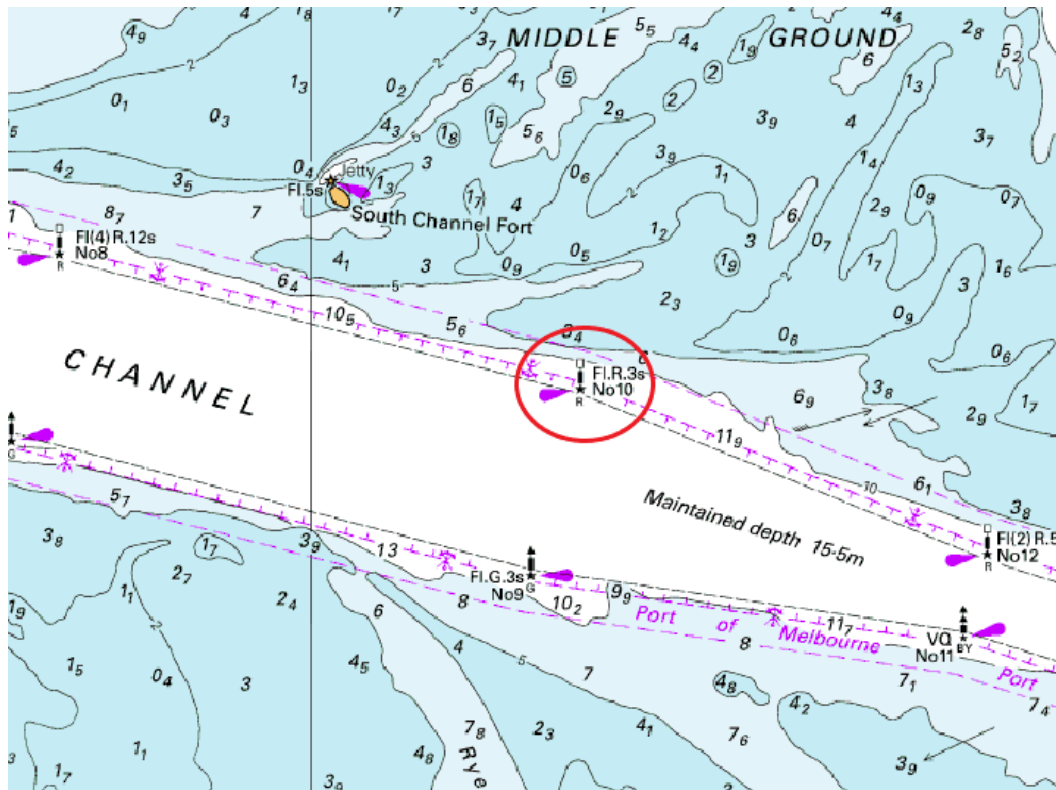
Further notice: Further notice will be issued.

A handwritten signature in black ink, consisting of several overlapping loops and a long horizontal stroke extending to the right.

**David Tilsley
Deputy Harbour Master
(Navigation Services)**

This notice is a direction of the Harbour Master pursuant to section 232 of the *Marine Safety Act 2010* (Vic)
The requirements of section 232(2) have been taken into account.

Victorian Notices to Mariners can be downloaded from the Victorian Ports Corporation (Melbourne) website
www.vicports.vic.gov.au



This notice is a direction of the Harbour Master pursuant to section 232 of the *Marine Safety Act 2010* (Vic)
 The requirements of section 232(2) have been taken into account.

Victorian Notices to Mariners can be downloaded from the Victorian Ports Corporation (Melbourne) website
www.vicports.vic.gov.au