

The following Notice to Mariners is published for general information

Australia – Victoria

No. 480 (T) - 2023

**PORT OF MELBOURNE
SOUTH WHARF 26
BERTH REMEDIATION WORKS**

Date: 23 November 2023

Refers: N/A

Details: Mariners and port users are advised that berth remediation works, involving diving operations, will be conducted on **two** different locations at **South Wharf 26** berth (refer attached works plan).

Remediation works at the berth are expected to commence on **24 November 2023** and continue for approximately **6 months**. Works will be conducted during daylight hours from **0700 hrs to 1700 hrs**.

Works will be conducted around shipping movements when **South Wharf 26** berth is not occupied, or when a vessel alongside **South Wharf 26** and/or **South Wharf 27** berth can be safely isolated. Clear access to the berth will be maintained during works whilst a vessel is alongside and will not interfere with vessel or cargo operations.

Diving operations will cease **30 minutes** prior to **arriving** and **departing** vessels to **South Wharf 26, South Wharf 27** and **Victoria Dock** berths.

Works will be supported by the following vessels:

- ***Franjo***
- ***Oversea***
- ***Newi***

Restrictions for passing vessels during **diving operations**:

- ***Minimum wake and wash***
- ***Minimum passing distance of 50m***

Works supervisor can be contacted on **0403 044 633** and **0499 939 159**. Vessels supporting works can be contacted on VHF channel 12.

Mariners are advised to navigate with additional caution in the vicinity of South Wharf 26 during works.

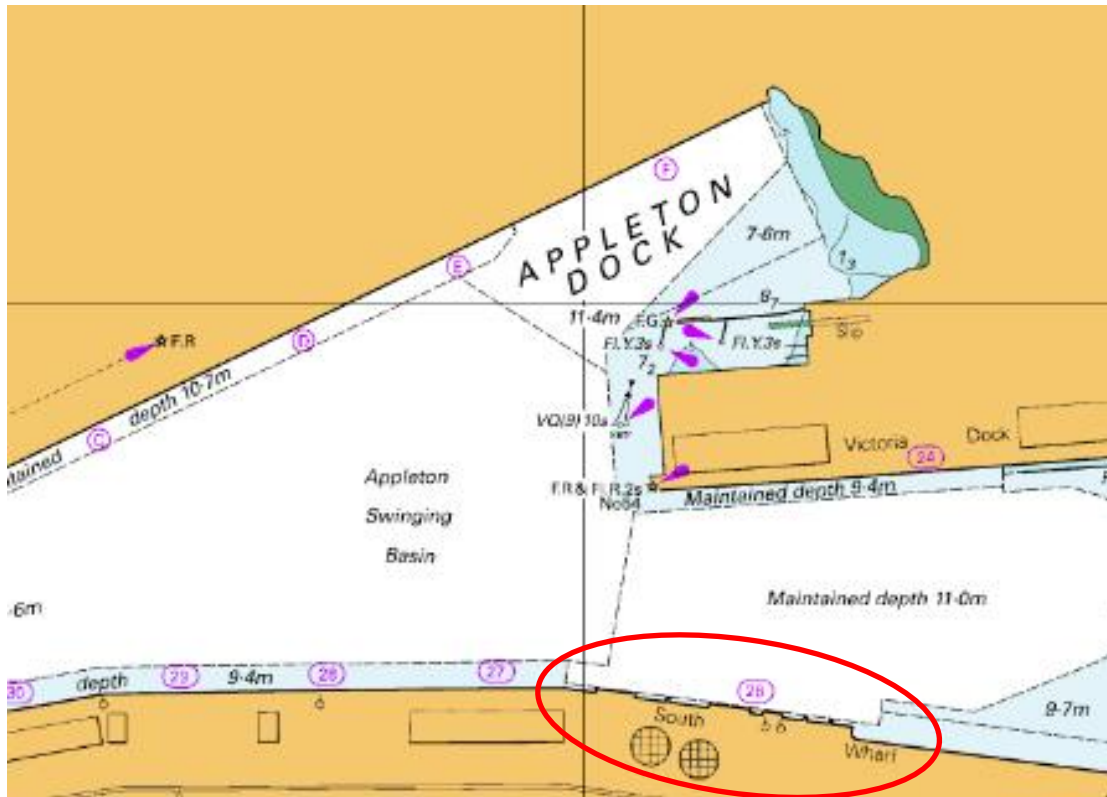
For further information, please contact Melbourne VTS on 9644 9700 / VHF channel 12 or email the Navigation Services department at NavigationServices@ports.vic.gov.au.

**Charts &
Publications
affected:** ENC AU5MEL01

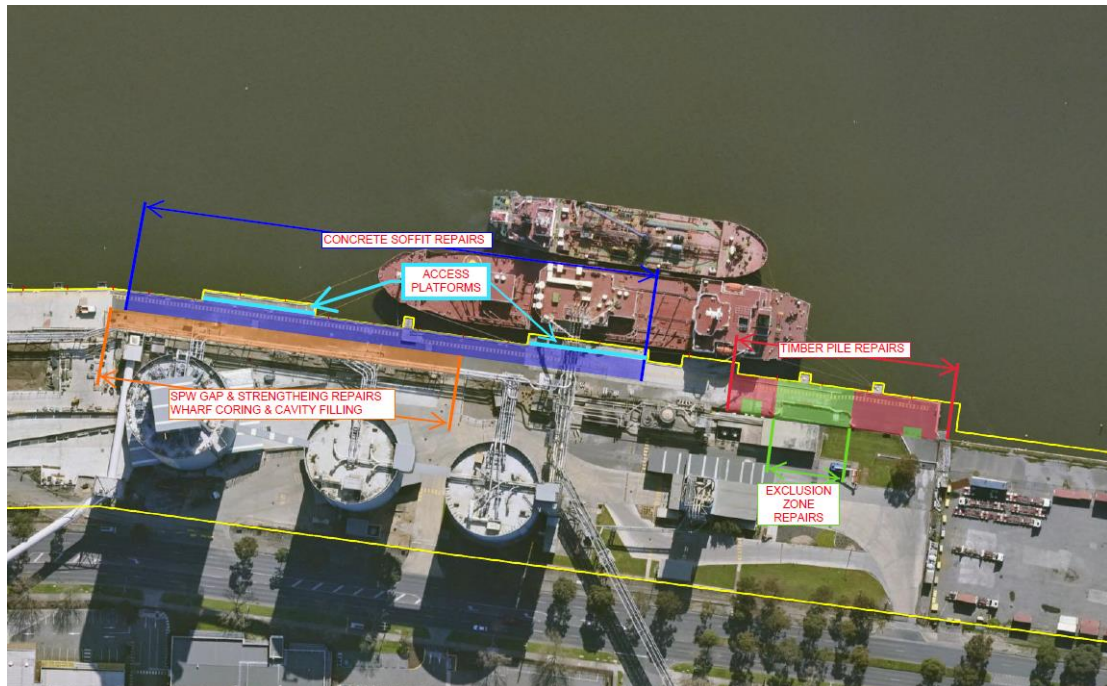
Further notice: Further notice will be issued.



**David Tilsley
Deputy Harbour Master
(Navigation Services)**



NOT FOR NAVIGATIONAL USE



SOUTH WHARF 26 - WORKS PLAN

This notice is a direction of the Harbour Master pursuant to section 232 of the *Marine Safety Act 2010* (Vic). The requirements of section 232(2) have been taken into account.