

The following Notice to Mariners is published for general information

Australia – Victoria

No. 048 (T) - 2024

**PORT OF MELBOURNE & GEELONG
PORT PHILLIP BAY
SEAFLOOR INTEGRITY SAMPLING**

Date: 1 February 2024

Refers: N/A

Details: Mariners and port users are advised that seafloor integrity sampling, involving diving operations, will take place from **6 February to 29 February 2024**, between the hours of **0700 hrs** and **1700 hrs**.

Collection of sediment cores will take place **around shipping movements** and will be supported by the vessel ***Fathom II*** in the following locations:

Site name	Latitude	Longitude
Geelong Pier	38°08.418' S	144°21.792' E
PPB 251	38°02.178' S	144°41.946' E
PPB 260	37°56.046' S	144°49.626' E
PPB 230	38°07.122' S	144°43.998' E
PPB 229	38°05.970' S	144°43.524' E
PPB 263	38°00.048' S	144°53.184' E
Gellibrand Shoal	37°52.692' S	144°54.786' E
PPB 202	37°52.212' S	144°56.028' E

Vessels engaged in diving operations will display International Code flag "Alpha".

Domestic commercial vessels and recreational vessels in the vicinity of sampling works, must reduce vessel speed so as to create no wash with a minimum passing distance of 50m.

The vessel ***Fathom II*** is contactable on 0421 693 120 or on VHF Channel 12.

For further information, contact Melbourne VTS on 9644 9700 / VHF Channel 12 or Geelong Marine Control on 5225 3565 / VHF Channel 12.

Mariners are advised to navigate with caution in the vicinity of the sampling works.

Charts & Publications affected: AUS 155, AUS 157
ENC AU5MEL01, AU5GEX01

Further notice: This is a self-cancelling NtM, and no further notice will be issued.



David Tilsley
Deputy Harbour Master
Port of Melbourne



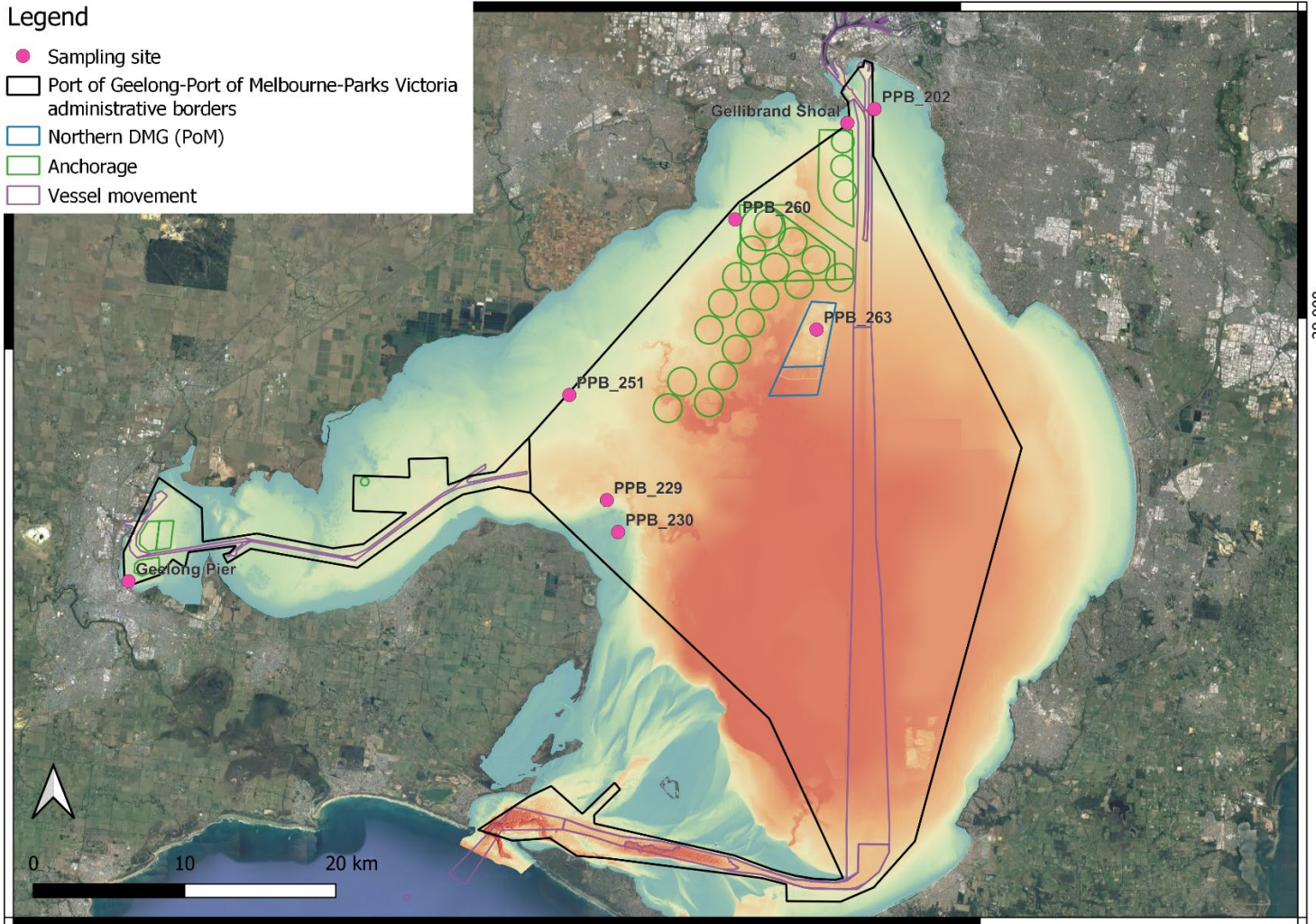
Kylie McDonald
Deputy Harbour Master
Port of Geelong

This notice is a direction of the Harbour Master pursuant to section 232 of the *Marine Safety Act 2010* (Vic)
The requirements of section 232(2) have been taken into account.

Ports Victoria Notices to Mariners can be downloaded from the website, www.vicports.vic.gov.au

Legend

- Sampling site
- Port of Geelong-Port of Melbourne-Parks Victoria administrative borders
- ▭ Northern DMG (PoM)
- ▭ Anchorage
- ▭ Vessel movement



NOT FOR NAVIGATIONAL USE

This notice is a direction of the Harbour Master pursuant to section 232 of the *Marine Safety Act 2010* (Vic)
The requirements of section 232(2) have been taken into account.

Ports Victoria Notices to Mariners can be downloaded from the website, www.vicports.vic.gov.au