

The following Notice to Mariners is published for general information

## Australia – Victoria

No. 052 (T) - 2024

### PORT OF MELBOURNE WEBB DOCK 2 EAST BERTH REMEDICATION WORKS

**Date:** 7 February 2024

**Refers:** NtM 015 (T) - 24 and is hereby cancelled.

**Details:** Mariners and port users are advised that bollard replacement and pile remediation works, involving diving operations, are being conducted at **Webb Dock 2 East berth** until approximately **August 2024** (reference attached works plan and chartlet).

Works will primarily be conducted from **0600hrs to 1800hrs**. Works may now also be conducted (when required) from **1800hrs to 0600hrs**.

The following conditions will apply for **diving operations and works** when **Webb Dock 2 East berth** is occupied by a coastal vessel:

1. Diving operations and works may be conducted **provided the coastal vessel can be safely isolated**.
2. Diving operations and works to cease **30 minutes** prior to **arrival and departure** of coastal vessels from **Webb Dock 2 East berth**.
3. Diving operations and works to cease **30 minutes** prior to **arrival and departure** of the bunker vessel to a coastal vessel at **Webb Dock 2 East berth**.
4. **No diving operations or hot works** will take place when **bunkering** is being conducted at **Webb Dock 2 East berth**.
5. Diving operations and works may continue during commercial vessel (SOLAS) movements to and from other berths in Webb Dock, with works operators monitoring wake and wash accordingly.

The following conditions will apply for **diving operations and works** when **Webb Dock 2 East berth** is not occupied by a coastal vessel:

1. Diving operations and works to cease **30 minutes** prior to **arrival and departure of all commercial vessels (SOLAS) in Webb Dock (all berths)**, including arrival/departure of the bunker vessel to a vessel at a berth.

Clear access for vessel, cargo, and mooring operations, both landside and waterside will be maintained during works.

The works may involve either of the following vessels:

- **Lobo**
- **Eliza**
- **Matilda Mae**

- **Franjo**

Restrictions for passing domestic commercial vessels during **diving operations**:

- **Maximum speed of 6 knots**
- **Minimum passing distance of 50m**

Dive vessels will display International Code flag Alpha during diving operations.

Works supervisor can be contacted on **0499 939 159**. Vessels supporting works can be contacted on VHF channel 12.

**Mariners are advised to navigate with additional caution in the vicinity of Webb Dock 2 East berth during works.**

For further information, please email the Navigation Services department at [NavigationServices@ports.vic.gov.au](mailto:NavigationServices@ports.vic.gov.au) or contact Melbourne VTS on 9644 9700 / VHF Channel 12.

**Charts &  
Publications  
affected:**

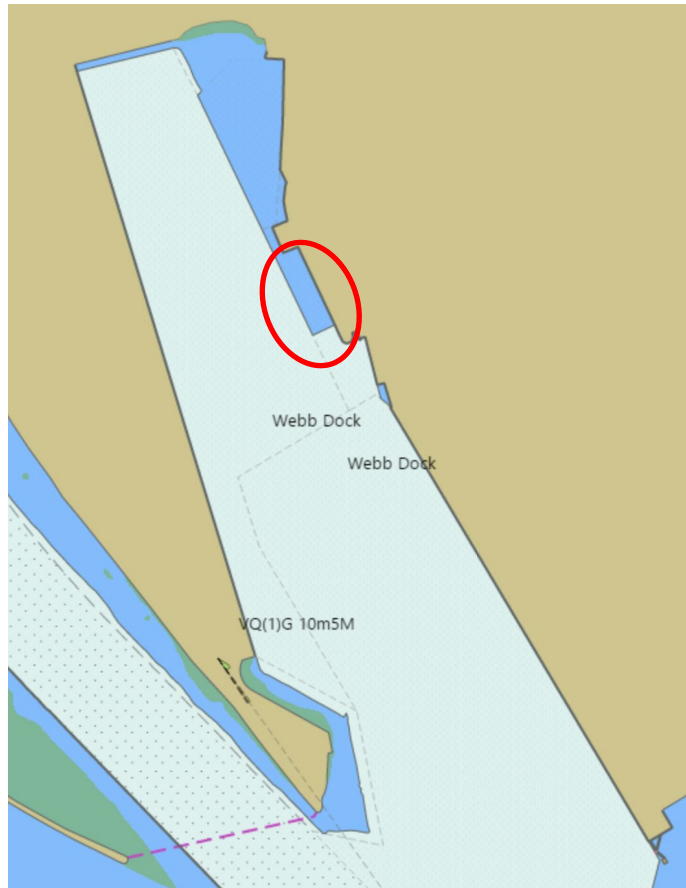
ENC AU5MEL01

**Further notice:**

Further notice will be issued.



**David Tilsley**  
Deputy Harbour Master  
Navigation Services



**NOT FOR NAVIGATIONAL USE**



**WORKS PLAN**

This notice is a direction of the Harbour Master pursuant to section 232 of the *Marine Safety Act 2010* (Vic)  
The requirements of section 232(2) have been taken into account.

Ports Victoria Notices to Mariners can be downloaded from the website, [www.vicports.vic.gov.au](http://www.vicports.vic.gov.au)