

The following Notice to Mariners is published for general information

## Australia – Victoria

No. 173 (T) - 2024

### PORT OF MELBOURNE WEBB DOCK 4 EAST BERTH CATHODIC PROTECTION INSTALLATION WORKS

**Date:** 23 April 2024

**Refers:** N/A

**Details:** Mariners and port users are advised that cathodic protection installation works, involving diving operations, will be undertaken at **Webb Dock 4 East berth** from **29 April 2024** to approximately **July 2024**.

Works will be conducted **Monday to Friday** from **0700 hrs to 1700 hrs**, north of **chainage 071 m** (refer attached works plan).

The following conditions will apply for **diving operations and works**:

1. When **Webb Dock 4 East berth** is occupied, berthed vessel to be **notified by works contractor**.
2. Diving operations and works shall maintain a **40m exclusion zone** from any mooring line and **50m exclusion zone** from a vessel berthed at **Webb Dock 4 East**.
3. **30 minutes** prior to **arrival and departure of a commercial vessel (SOLAS) to Webb Dock 4 East berth**, including arrival/departure of the bunker vessel to a vessel at berth, the following applies:
  - **Diving operations and works to cease**
  - **Personnel and work vessels to vacate area**
4. **30 minutes** prior to **arrival and departure of all commercial vessels (SOLAS) in Webb Dock (all other berths)**, including arrival/departure of the bunker vessel to a vessel at a berth, the following applies:
  - **Diving operations and works to cease**
5. **No diving operations or hot works** will take place when **bunkering** is being conducted at **Webb Dock 4 East berth**.

Clear access for vessel, cargo, and mooring operations, both landside and waterside will be maintained during works.

The works may involve either of the following vessels:

- **Lobo**
- **Oversea**
- **Eliza**
- **Franjo**

Restrictions for passing domestic commercial vessels during **diving operations**:

- **Maximum speed of 6 knots**
- **Minimum passing distance of 50m**

Dive vessels will display International Code flag Alpha during diving operations.

Works supervisor can be contacted on **0499 939 159** or **0421 804 460**. Vessels supporting works can be contacted on VHF Channel 12.

**Mariners are advised to navigate with additional caution in the vicinity of Webb Dock 4 East berth during works.**

For further information, please email the Navigation Services department at [NavigationServices@ports.vic.gov.au](mailto:NavigationServices@ports.vic.gov.au) or contact Melbourne VTS on 9644 9700 / VHF Channel 12.

**Charts &  
Publications  
affected:**

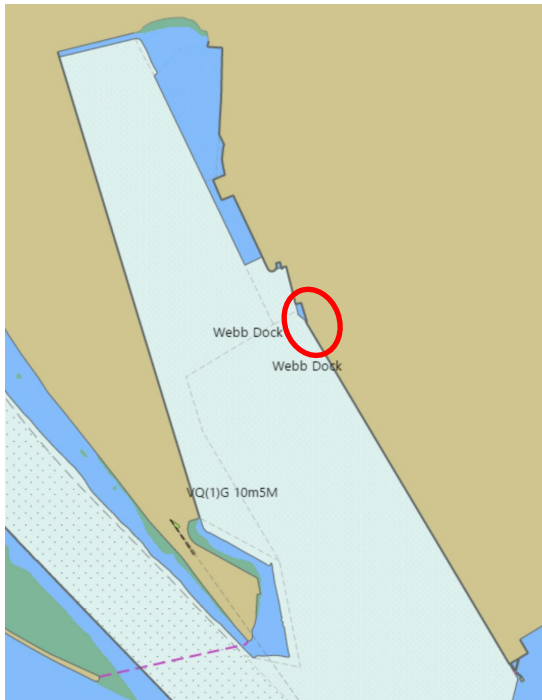
ENC AU5MEL01

**Further notice:**

Further notice will be issued.



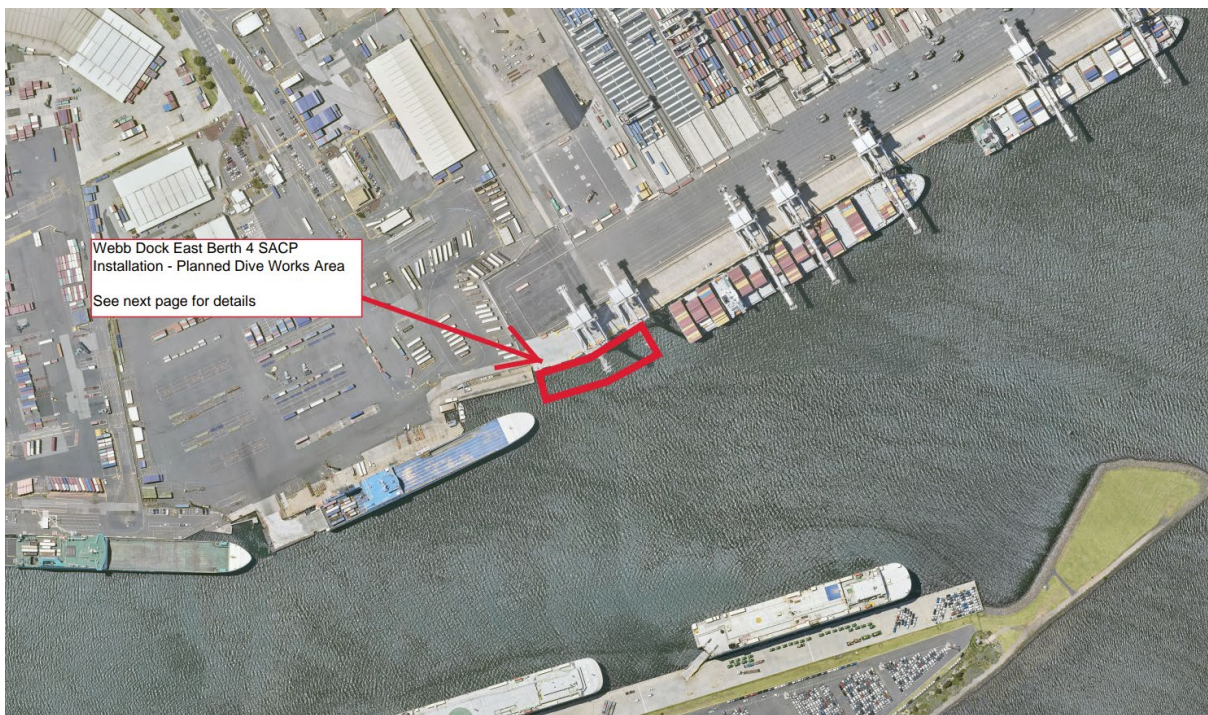
**David Tilsley**  
Deputy Harbour Master  
Navigation Services



**NOT FOR NAVIGATIONAL USE**



**WORKS PLAN**



**WORKS PLAN**

This notice is a direction of the Harbour Master pursuant to section 232 of the *Marine Safety Act 2010* (Vic)  
 The requirements of section 232(2) have been taken into account.