

The following Notice to Mariners is published for general information

Australia – Victoria

No. 211 (T) - 2024

**PORT OF MELBOURNE
SWANSON DOCK 1 EAST**

BOLLARD, PILE AND PAVEMENT REMEDIATION WORKS

Date: 17 May 2024

Refers: NtM 152 (T) – 24 and is hereby cancelled

Details: Mariners are advised that bollard, pile and pavement remediation works, involving **diving operations**, will be undertaken at **Swanson Dock East No.1 berth** for approximately **3 months**.

Swanson Dock East No. 1 berth will not be available for commercial vessels (SOLAS) between chainage **0m to 190m** (reference site plan).

The southern most bollard available for use is located at **chainage 205m** (reference bollard availability diagram).

The remediation works will now be conducted from **Monday to Sunday, 24 hrs per day**.

Works will be undertaken from waterside and shoreside, include **diving operations** and **under wharf works** from work vessels and platforms.

The following conditions will apply for **works**:

1. When **diving operations** and / or **under wharf works** are within **50m** of a **berthed commercial vessel (SOLAS)**, the vessel is to be **notified by works contractor**
2. **30 minutes** prior to **arrival** and **departure** of a **commercial vessel (SOLAS) to Swanson Dock, all berths**, including arrival/departure of the bunker vessel to a vessel at berth, the following applies:
 - **Diving operations and under wharf works to cease**
 - **Work vessel to vacate area**
 - **Personnel to vacate under wharf work platforms**
3. **No diving operations or hot works** will take place when **bunkering** is being conducted at **Swanson Dock East No.2 berth**.

The works may involve either of the following vessels:

- **Seafix 4**
- **Seafix 5**
- **3m punt**

Restrictions for passing **domestic commercial vessels** during **works**:

- **Minimum wake and wash**
- **Minimum passing distance of 50m**

Dive vessels will display International Code flag Alpha during diving operations.

Works supervisor can be contacted on **0419 381 228**. Vessels supporting works can be contacted on VHF Channel 12.

Mariners are advised to navigate with caution in the vicinity of Swanson Dock during the period of works.

For further information, please email the Navigation Services department at NavigationServices@ports.vic.gov.au or contact Melbourne VTS on 9644 9700 / VHF Channel 12.

**Charts &
Publications
affected:**

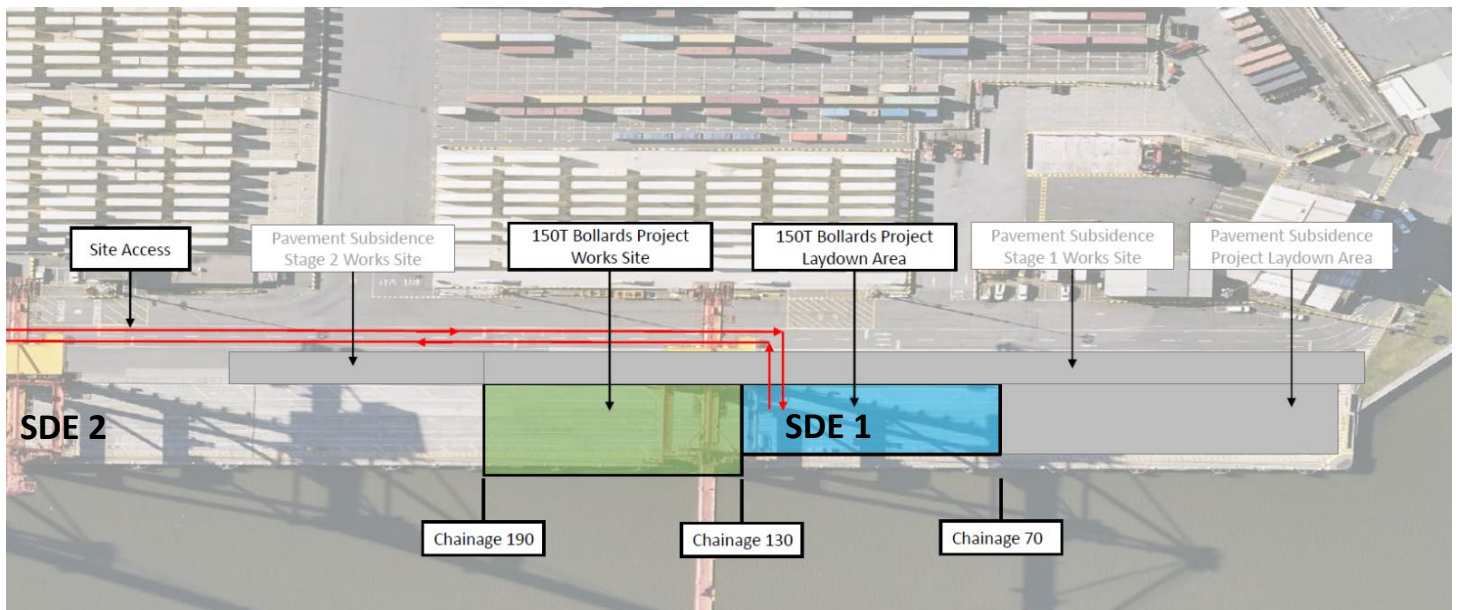
ENC AU5MEL01

Further notice:

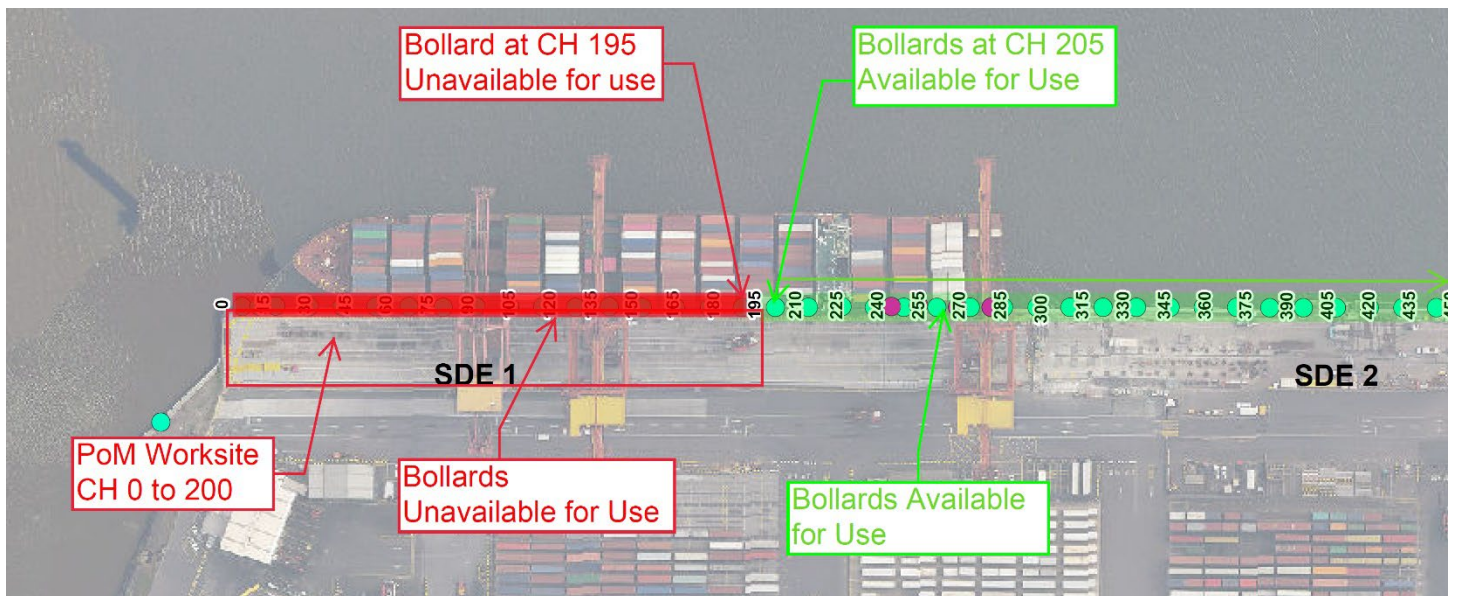
Further notice will be issued.



**David Tilsley
Deputy Harbour Master
Navigation Services**



Swanson Dock East – Site plan



Swanson Dock East – Bollard availability

This notice is a direction of the Harbour Master pursuant to section 232 of the *Marine Safety Act 2010* (Vic)
 The requirements of section 232(2) have been taken into account.

Ports Victoria Notices to Mariners can be downloaded from the website, ports.vic.gov.au