

The following Notice to Mariners is published for general information

Australia – Victoria

No. 273 (T) - 2024

PORT OF MELBOURNE SOUTH WHARF 33 PILE WORKS EXTENDED

Date: 25 June 2024

Refers: NtM 223 (T) - 24 and is hereby cancelled

Details: Mariners and port users are advised that pile works, involving diving and pile driving operations, has been extended at **South Wharf 33** berth until further notice.

Works will be conducted from **0700 hrs to 1700 hrs around shipping movements**.

The following conditions will apply for **works**:

1. When **diving operations** and / or **work afloat works** are within **50m** of a **berthed commercial vessel (SOLAS)**, the vessel is to be **notified by the works contractor**
2. **30 minutes** prior to a **commercial vessel (SOLAS) transiting to or from berths at Yarraville, Maribyrnong, Swanson Dock, Appleton Dock, Victoria Dock and South Wharf**, including transiting of the bunker vessel, the following applies:
 - **Diving operations to cease**
3. **30 minutes** prior to the **departure of a commercial vessel (SOLAS) from Swanson Dock** with LOA >310 m to ≤337 m and/or with a beam >42.9 m to ≤45.6 m, the following applies:
 - **All works to cease**
 - **Work vessels and barges to vacate South Wharf 33 berth**
4. **No diving operations or hot works** will take place when **bunkering** is being conducted at **South Wharf 33**.

Clear access for vessel, cargo, and mooring operations, both landside and waterside will be maintained during works.

The works may involve either of the following vessels:

- ***Eliza***
- ***Franjo***
- ***Pile Barge 162***
- ***Oversea***
- ***Wizard***

Restrictions for passing **domestic commercial vessels** and **recreational vessels** during **diving operations**:

- ***Minimum wake and wash***
- ***Minimum passing distance of 50m***

Dive vessels will display International Code flag Alpha **during diving operations**.

Works supervisor can be contacted on **0488 939 222**. Vessels supporting works can be contacted on VHF Channel 12.

Mariners are advised to navigate with additional caution in the vicinity of South Wharf 33 berth during works.

For further information, please email the Navigation Services department at NavigationServices@ports.vic.gov.au or contact Melbourne VTS on 9644 9700 / VHF Channel 12.

**Charts &
Publications
affected:**

ENC AU5MEL01

Further notice:

Further notice will be issued.



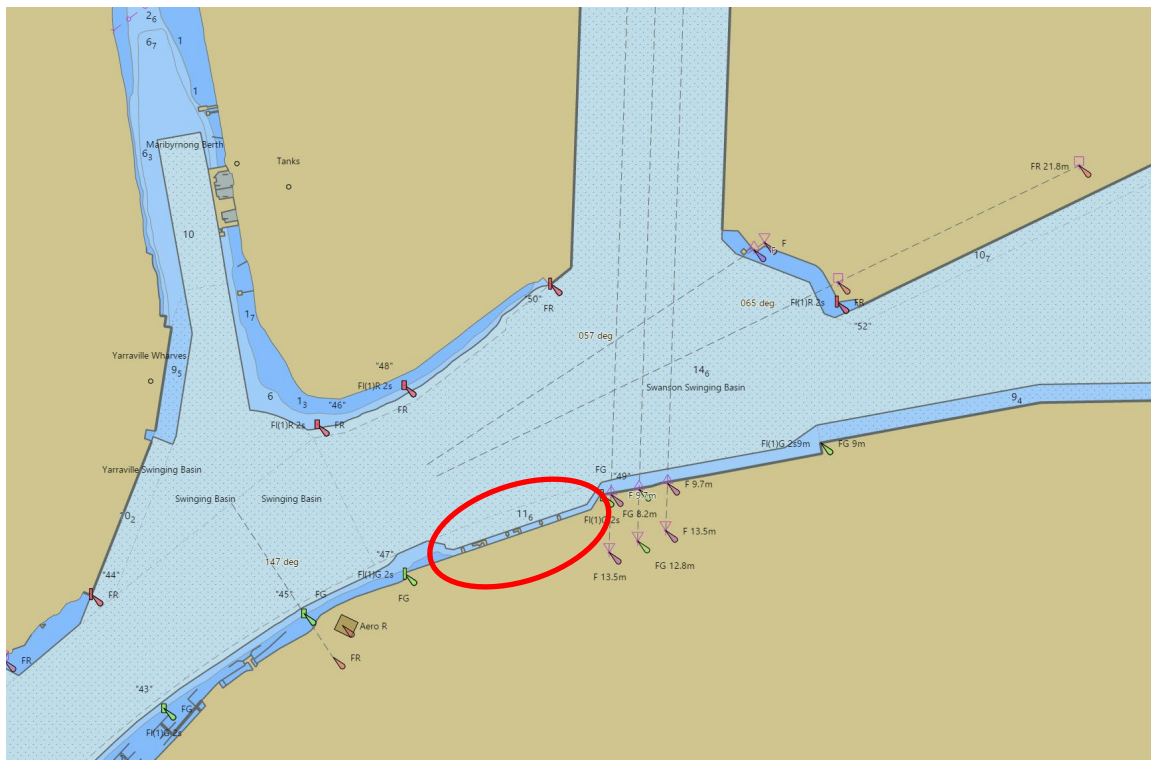
David Tilsley
Deputy Harbour Master
Navigation Services



SITE PLAN



WORKS AREA



NOT FOR NAVIGATIONAL USE

This notice is a direction of the Harbour Master pursuant to section 232 of the *Marine Safety Act 2010* (Vic). The requirements of section 232(2) have been taken into account.

Ports Victoria Notices to Mariners can be downloaded from the website, ports.vic.gov.au