

The following Notice to Mariners is published for general information

Australia – Victoria

No. 313 (T) - 2024

PORT OF MELBOURNE YARRA RIVER DREDGING TRIALS

Date: 30 July 2024

Refers: N/A

Details: Mariners and port users are advised that trials of dredging works will be undertaken in the **Yarra River**, adjacent to **Victoria Dock 24** (reference attached chartlet), from **31 July** for approximately **3 days**.

Trial dredging works will be conducted from **0600 hrs to 1800 hrs** around shipping movements.

The following conditions will apply for the **works**:

30 minutes prior to **arrival** and **departure** of a **commercial vessel (SOLAS)** to **Victoria Dock 24** or **South Wharf 26**, including arrival/departure of the bunker vessel to a vessel at berth, the following applies:

- **Trial works to cease**
- **Works vessels to vacate area**

The works may involve either of the following vessels:

- ***Molly Grace (29m Tug)***
- ***Caity-Z (7.3m Workboat)***
- ***Onyx (6.8m Workboat)***

Restrictions for passing **domestic commercial vessels** and **recreational vessels** during **works**:

- ***No wake and wash zone, Bolte Bridge to west end of Victoria Dock 24 (reference Traffic Plan figure 1)***
- ***Pass on south side of Yarra River (reference Traffic Plan figure 1)***
- ***Minimum passing distance of 50m***

Works supervisor can be contacted on **0415 652 627**. Vessels supporting works can be contacted on VHF Channel 12.

Mariners are advised to navigate with additional caution in the vicinity of Victoria Dock 24 during trials of dredging works.

For further information, please email the Navigation Services department at NavigationServices@ports.vic.gov.au or contact Melbourne VTS on 9644 9700 / VHF Channel 12.

**Charts &
Publications
affected:**

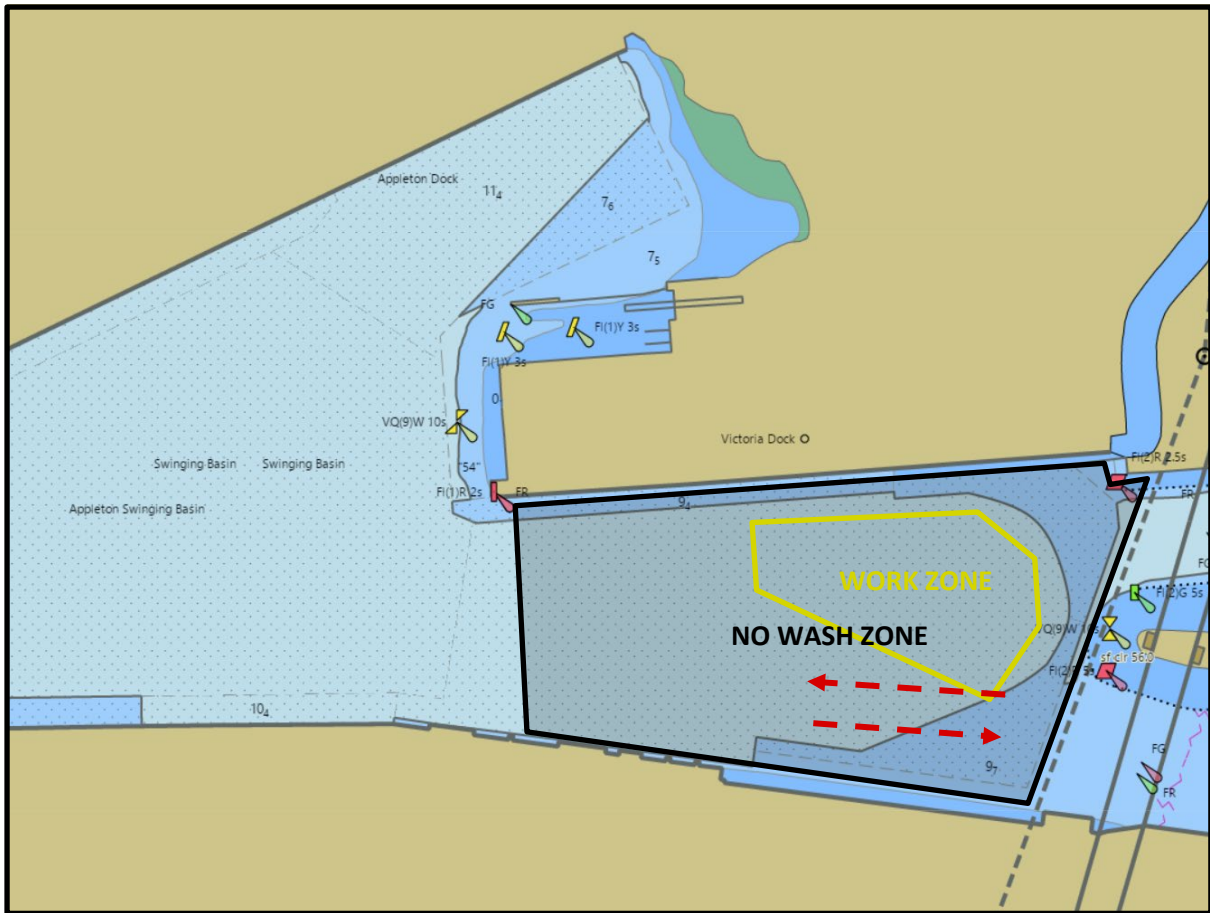
ENC AU5MEL01

Further notice:

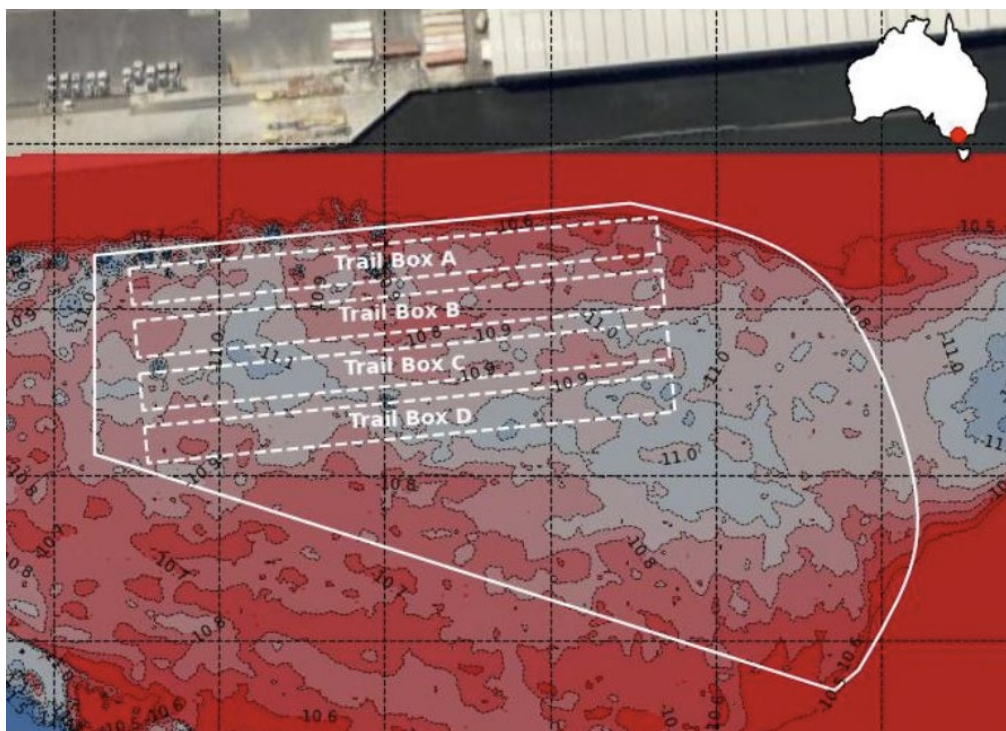
Further notice will be issued.



**David Tilsley
Acting Harbour Master**



**TRAFFIC PLAN FIGURE 1
NOT FOR NAVIGATIONAL USE**



SITE PLAN

This notice is a direction of the Harbour Master pursuant to section 232 of the *Marine Safety Act 2010* (Vic)
The requirements of section 232(2) have been taken into account.