

The following Notice to Mariners is published for general information

Australia – Victoria

No. 358 (T) - 2024

PORT OF MELBOURNE PORT MELBOURNE CHANNEL BEACON REPLACEMENT WORKS

Date: 30 August 2024

Refers: N/A

Details: Mariners are advised beacon replacement works will be undertaken for **Port Melbourne Channel beacons 3, 7, 8, 9, 70, 73, 74, 76, 78 and 79** (reference figure 1 and 2), from **2 September 2024** until further notice. Works will be conducted **daily** from **0700 hrs to 1700 hrs**, subject to weather conditions.

The works will involve removal of existing beacon topside, installation of new beacon pile, removal of original pile and installation of new beacon topside. Up to 3 beacons may be in different stages of replacement during works.

Beacon light arrangements during replacement works as follows:

1. New beacon pile present and original beacon pile present – flashing yellow light installed on new beacon pile – FL (Y)
2. New beacon pile present and original beacon pile removed – temporary light installed on new beacon pile with original beacon light characteristics
3. New beacon pile not present and original beacon pile removed – nil light

The works may involve either of the following **vessels**:

- *AMS Gladstone (64m LOA barge with 250t crane)*
- *Rhumb 4113 (41m LOA storage barge)*
- *Ando (tug)*
- *Allunga (tug)*
- *Henk*
- *Lobo*
- *Eliza*
- *ERV1*

The following conditions will apply for the **works**:

1. **30 minutes** prior to the **passing** of a **commercial vessel (SOLAS), transiting the Port Melbourne Channel**, including the transit of the bunker vessel, the following applies:
 - Works, diving and crane operations to cease
 - Works vessels (except *AMS Gladstone*) to clear area
 - Personnel to vacate barge when located at **beacon 70** (inbound transits only)

2. *AMS Gladstone* may be moored **during works** in adjacent waters to beacons **3, 7, 8, 9, 70, 73, 74, 76, 78 and 79** (figure 3).
3. *AMS Gladstone* may be moored and **unattended** in adjacent waters to beacons **3, 7, 9, 70, 73, 74, 76, 78 and 79** (figure 4). Beacon 8 not included.
4. *AMS Gladstone* and work vessels are fitted with **AIS**.
5. *AMS Gladstone* during hours of darkness will display yellow flashing lights at the bow and stern, as well as flood lighting illuminating the barge deck.

Restrictions for **commercial vessels (SOLAS)** transiting in the following channels during works when barge is on location:

- **Port Melbourne Channel** – transit at **maximum speed 10kts** in the vicinity of beacon works, minimum wash where possible, minimum passing distance 50m. Contact Melbourne VTS if not achievable, to enable notification to works contractor.
- **East of Port Melbourne Channel or Eastern By-Pass Channel** - **no passing** of *AMS Gladstone* permitted.
- **Western By-Pass Channel** – **no passing** of *AMS Gladstone* permitted.

Restrictions for passing domestic commercial vessels and recreational vessels during **works**:

- **Minimum wake and wash**
- **Minimum passing distance of 50m**

Dive vessels will display International Code flag Alpha during diving operations.

Works supervisor can be contacted on **0488 939 222**. Vessels supporting works can be contacted on VHF Channel 12.

Mariners are advised to navigate with additional caution in the vicinity of beacons 3, 7, 8, 9, 70, 73, 74, 76, 78 and 79 during works.

For further information, please email the Navigation Services department at NavigationServices@ports.vic.gov.au or contact Melbourne VTS on 9644 9700 / VHF Channel 12.

**Charts &
Publications
affected:**

ENC AU5MEL01

Further notice: Further notice will be issued.



Paul Fleming
Acting Deputy Harbour Master
Navigation Services

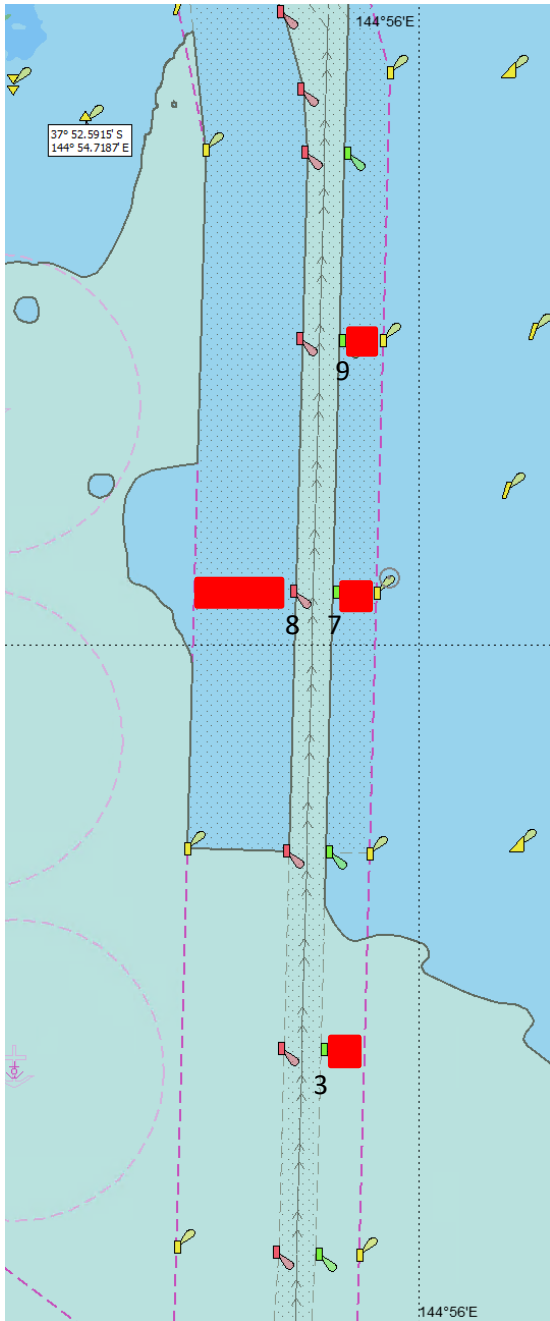


Figure 1

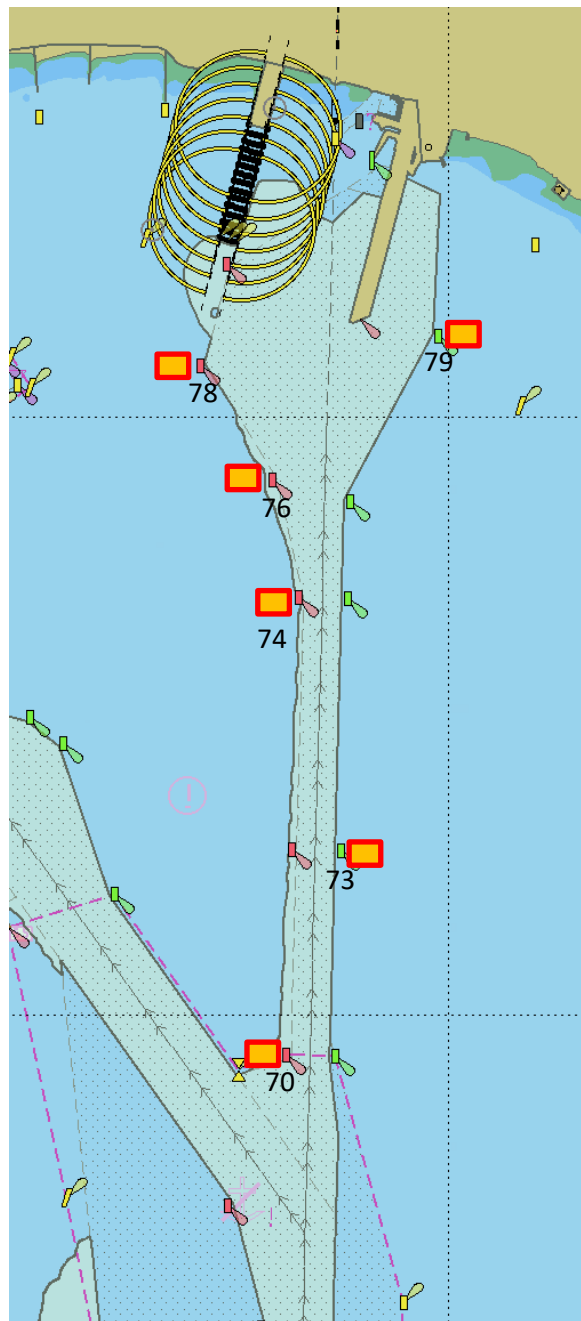


Figure 2

NOT FOR NAVIGATIONAL USE

- Approximate mooring area of barge and work vessels during beacon replacement works and when barge unattended (beacon 8 not included). **No passing** of AMS *Gladstone* permitted in mooring area by commercial vessels (SOLAS).

- Approximate mooring area of barge and work vessels during beacon replacement works and when barge unattended.

This notice is a direction of the Harbour Master pursuant to section 232 of the *Marine Safety Act 2010* (Vic)
 The requirements of section 232(2) have been taken into account.

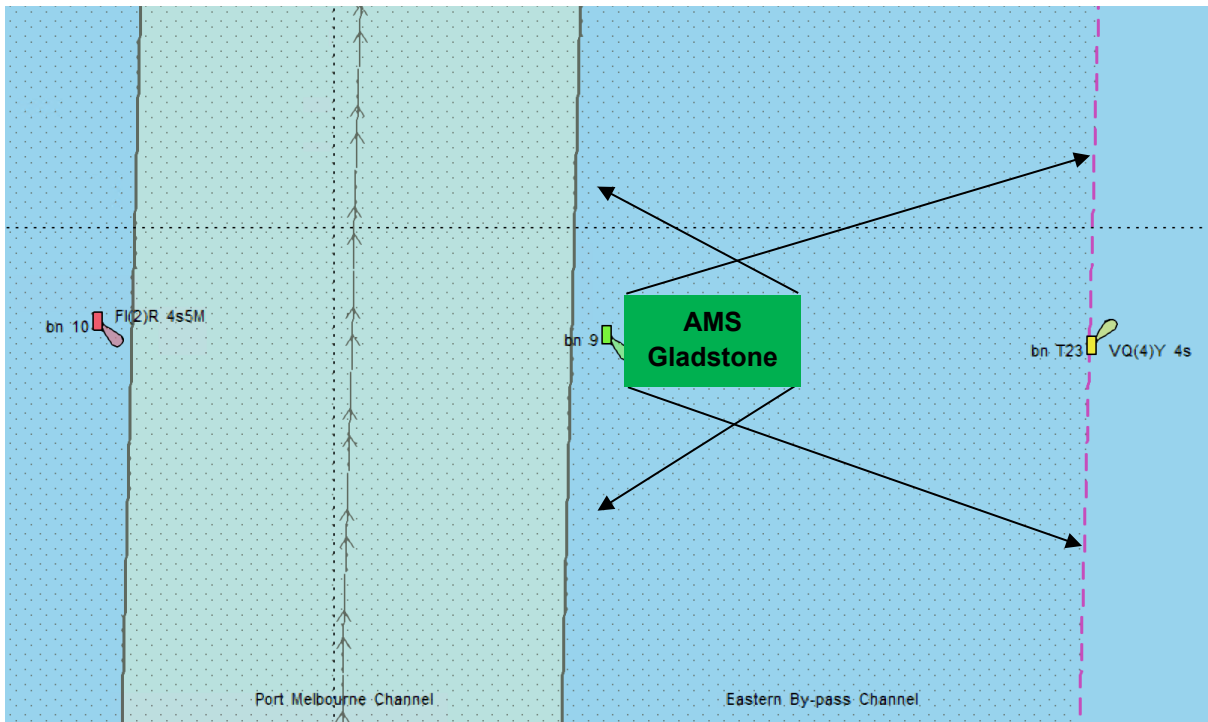


Figure 3

Typical positioning of AMS Gladstone during works at 3, 7, 8, 9, 70, 73, 74, 76, 78 and 79

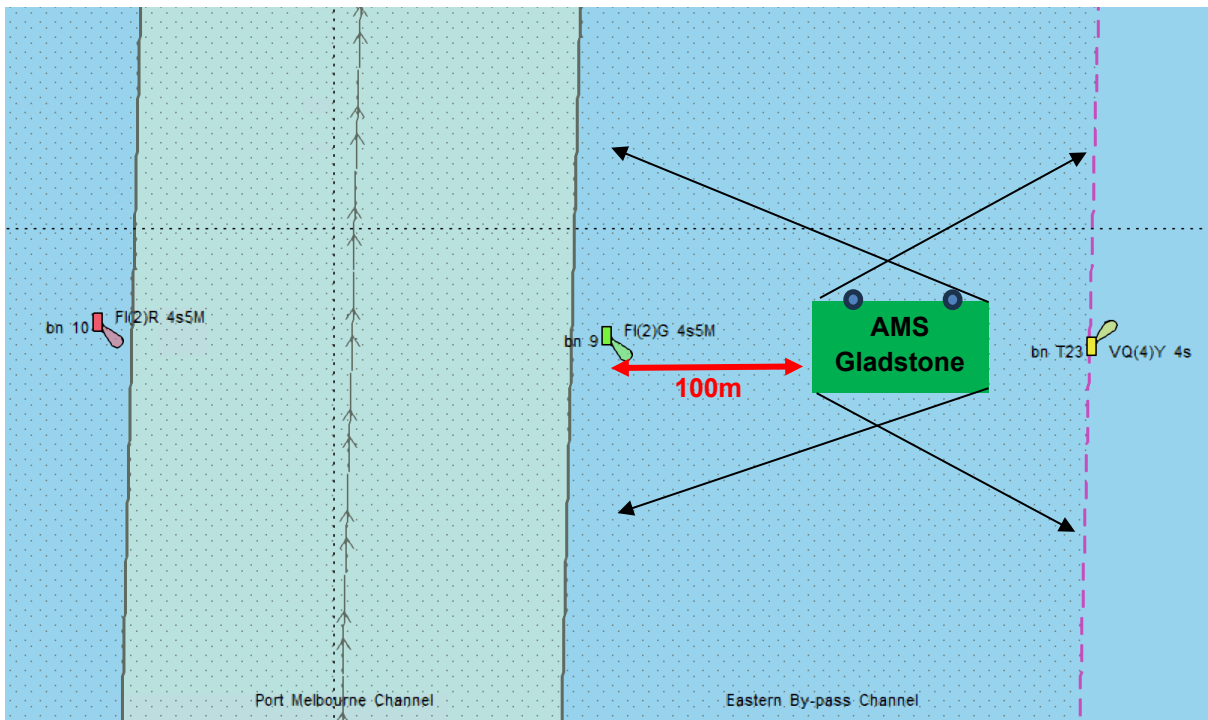


Figure 4

Typical positioning of AMS Gladstone when unattended at 3, 7, 9, 70, 73, 74, 76, 78 and 79

This notice is a direction of the Harbour Master pursuant to section 232 of the *Marine Safety Act 2010* (Vic)
The requirements of section 232(2) have been taken into account.

Ports Victoria Notices to Mariners can be downloaded from the website, ports.vic.gov.au



AMS Gladstone



Rhumb 4113



Allunga



Ando



Henk



Lobo / Eliza



ERV1

This notice is a direction of the Harbour Master pursuant to section 232 of the *Marine Safety Act 2010* (Vic)
The requirements of section 232(2) have been taken into account.

Ports Victoria Notices to Mariners can be downloaded from the website, ports.vic.gov.au