

The following Notice to Mariners is published for general information

Australia – Victoria

No. 384 (T) - 2024

**PORT OF MELBOURNE
STATION PIER
PILE DRIVING AND REHABILITATION WORKS**

Date: 13 September 2024

Refers: NtM 233 (T) – 24 and is hereby cancelled

Details: Mariners are advised that pile driving and rehabilitation works, involving diving operations, will take place at **Station Pier (all berths)** from **13 September** until further notice.

Works will be conducted **Monday to Friday 0730 hrs to 1700 hrs** and **Saturday 0730 hrs to 1600 hrs** around shipping movements.

The following conditions will apply for works:

1. When **diving operations** and / or **under wharf works**, including pile driving works, are within **50m** of a **berthed commercial vessel (SOLAS)**, the vessel is to be **notified by works contractor**
2. **30 minutes** prior to **arrival** and **departure** of a **commercial vessel (SOLAS)** at **Station Pier, passing or berthing within 50m of works**, including arrival/departure of the bunker vessel, the following applies:
 - **Diving operations and under wharf works, including pile driving works to cease**
 - **Work vessels to vacate area**
3. **No diving operations or hot works** to be conducted **within 50m of bunkering operations** at Station Pier.

The works may involve either of the following vessels:

- **Lobo**
- **Matilda Mae**
- **Nuwi**
- **Little River**
- **Oversea**
- **Wizard**
- **Eliza**
- **Work Punt**
- **162 Pile Barge**

Restrictions for passing **domestic commercial vessels** and **recreational vessels** during works:

- **Minimum passing distance of 50m**
- **Minimum wake and wash**

Dive vessels will display International Code flag Alpha during diving operations.

Works supervisor can be contacted on **0401 304 816**. Vessels supporting works can be contacted on VHF Channel 12.

Mariners are advised to navigate with additional caution in the vicinity of Station Pier during works.

For further information, please email the Navigation Services department at NavigationServices@ports.vic.gov.au or contact Melbourne VTS on 9644 9700 / VHF Channel 12.

**Charts &
Publications
affected:**

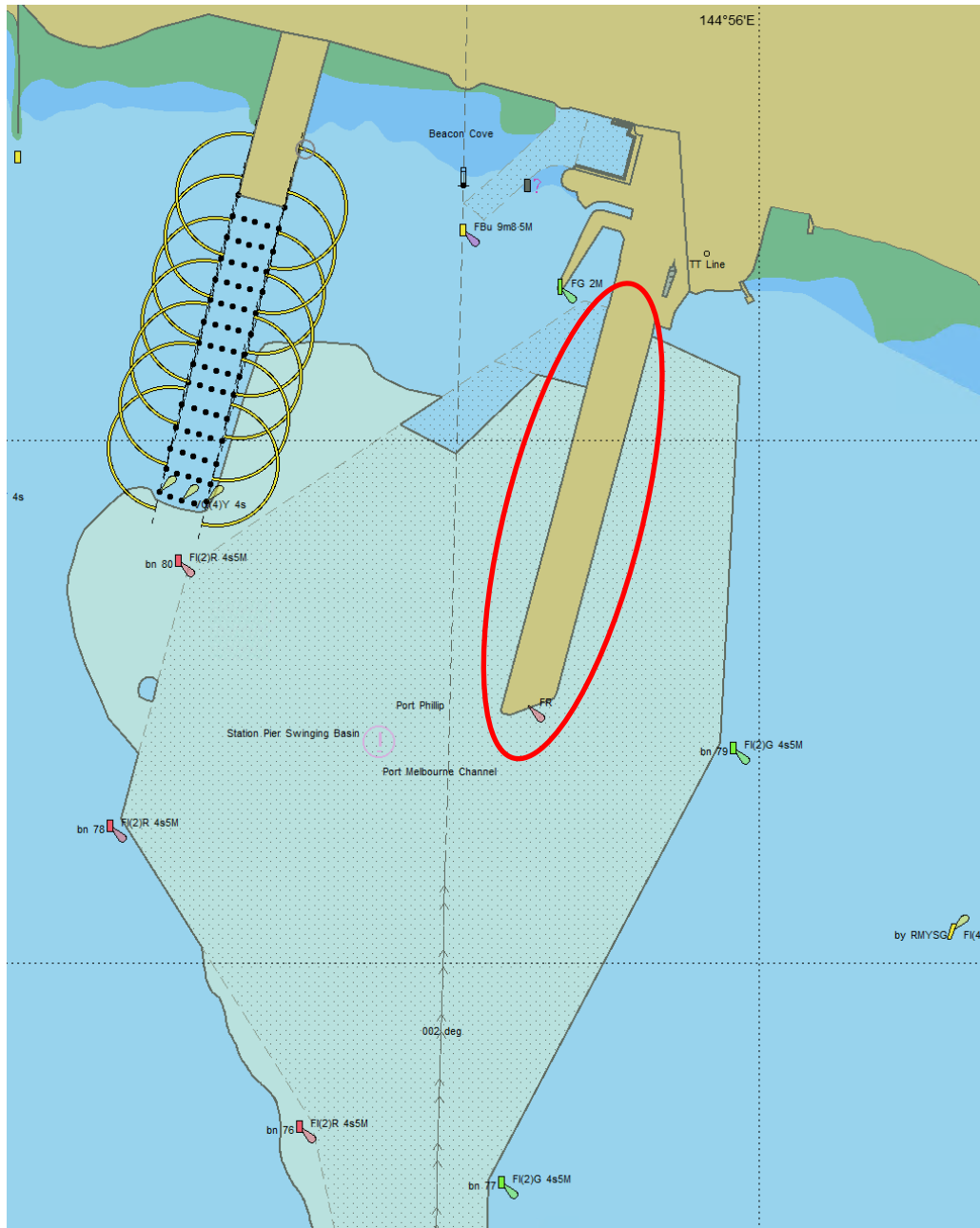
AUS 155
ENC AU5MEL01

Further notice:

Further notice will be issued.



**Paul Fleming
Deputy Harbour Master
Navigation Services**



NOT FOR NAVIGATIONAL USE

This notice is a direction of the Harbour Master pursuant to section 232 of the *Marine Safety Act 2010 (Vic)*
 The requirements of section 232(2) have been taken into account.

Ports Victoria Notices to Mariners can be downloaded from the website, ports.vic.gov.au