

The following Notice to Mariners is published for general information

**Australia – Victoria**

**No. 395 (T) - 2024**

**PORT OF MELBOURNE  
YARRA RIVER**

**REMEDIAION WORKS OF SERVICES PROTECTION STRUCTURE**

**Date:** 19 September 2024

**Refers:** N/A

**Details:** Mariners are advised that remediation works, involving diving operations will take place on the **Yarra River services protection structure** from **20 September 2024** until further notice.

Here attached Government Gazette Notice – **No. 1914 – G 38 – 19 September 2024**.

Works may be conducted **Monday to Saturday, 0900 hrs to 1500 hrs**, with a minimum of **6 hours** for the operational works window. Start times for works may shift as early as **0700 hrs** or as late as **1000 hrs**.

The works will involve the following vessels:

- **Prodiver**
- **Jazz 1 (security vessel)**
- **Viking**

The navigation and movement of vessels with a **length overall 50m or greater** is **prohibited** from waters of the Yarra River between beacons 37/38B to beacons 33/34 during the operational works window.

The navigation and movement of vessels with a **length overall of less than 50m** is **restricted** from waters of the Yarra River between beacons 37/38B to beacons 33/34 during the operational works window (reference figure 1) as follows:

- **Less than or equal to 5 knots (with no wash)**
- **Minimum passing distance 50m from dive vessels displaying an Alpha "A" flag.**
- **Pass as per traffic plan (figures 2, 3 and 4)**

**Jazz 1** (security vessel) in immediate vicinity of the works will have visible orange flashing lights and signage indicating the direction for safe passage during the operational works windows.

The works supervisor is contactable on **0417 100 624**. Works vessels are contactable on VHF Channel 12.

For further information, please email the Navigation Services department at [NavigationServices@ports.vic.gov.au](mailto:NavigationServices@ports.vic.gov.au) or contact Melbourne VTS on 9644 9700 / VHF Channel 12.

**Mariners are advised to navigate with additional caution when in the vicinity of the works area.**

**Charts &  
Publications  
affected:**

ENC AU5MEL01

**Further notice:**

Further notice will be issued.



**David Tilsley  
Acting Harbour Master**

**Marine Safety Act 2010**

## Section 211(1)

## NOTICE CONTROLLING NAVIGATION IN THE VICINITY OF WORKS

Ports Victoria, the port management body for the port waters of the port of Melbourne, makes the following notice under section 211(1) of the **Marine Safety Act 2010** for the purposes of the works activity proposed by the port of Melbourne operator to undertake remediation works on the Yarra River Services protection structure.

The navigation and movement of vessels is restricted and/or prohibited from waters of the Yarra River between beacons 37/38B (adjacent West Gate Bridge) to beacons 33/34, as detailed below in Table 1, excluding vessels involved in the works and emergency response vessels.

**Table 1: Yarra River Services protection structure remediation works, port of Melbourne waters**

Dates and Times	Works Waters	Vessel Type	River Traffic
Intermittently from 20 September 2024 to 16 May 2025.  From Monday to Saturday 9.00 am to 3.00 pm.	Waters of the Yarra River between beacons 33/34 and 37/38B	<b>Vessels – less than 50 m length overall</b>  <b>Operational Windows<sup>1</sup></b>	Permitted to pass at less than or equal to 5 knots (with no wash) and maintain at least 50 m passing distance from dive vessels displaying an Alpha ‘A’ flag.
		<b>Vessels – 50 m length overall or greater</b>  <b>Operational Windows<sup>2</sup></b>	Navigation and other movement of vessels with a length overall of 50 m or greater is prohibited.

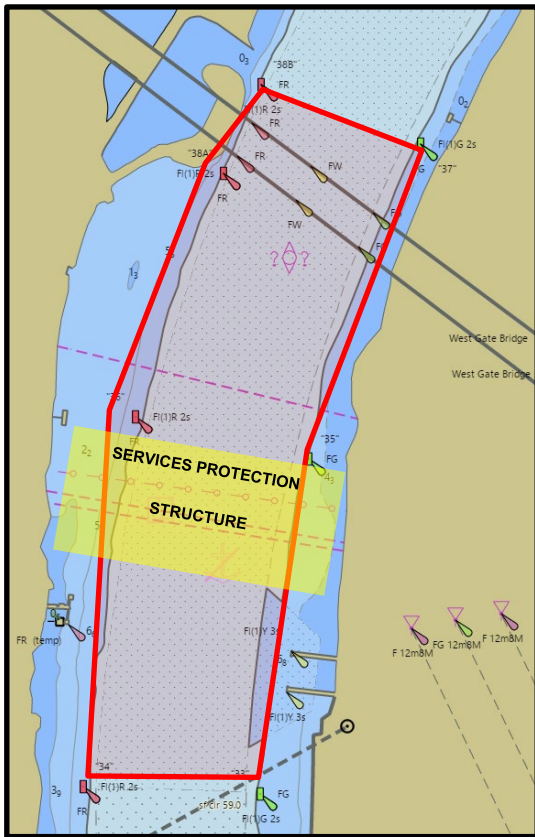
**Operational Windows<sup>1</sup>:** Operational windows will be minimum of six hours in duration and will be scheduled between 9.00 am to 3.00 pm on the nominated days. Start times may shift as early as 7.00 am or as late as 10.00 am, at Ports Victoria’s discretion. Security vessel in immediate vicinity of the works will have visible orange flashing lights and signage indicating the direction for safe passage during operational windows.

**Operational Windows<sup>2</sup>:** Dates and times for the prohibition of navigation and other movement of vessels with a length overall of 50 m or greater will be promulgated by email from Ports Victoria to stakeholders the day prior to works commencing. Operational windows will be minimum of six hours in duration and will be scheduled between 9.00 am to 3.00 pm on the nominated days. Start times may shift as early as 7.00 am or as late as 10.00 am, at Ports Victoria’s discretion.

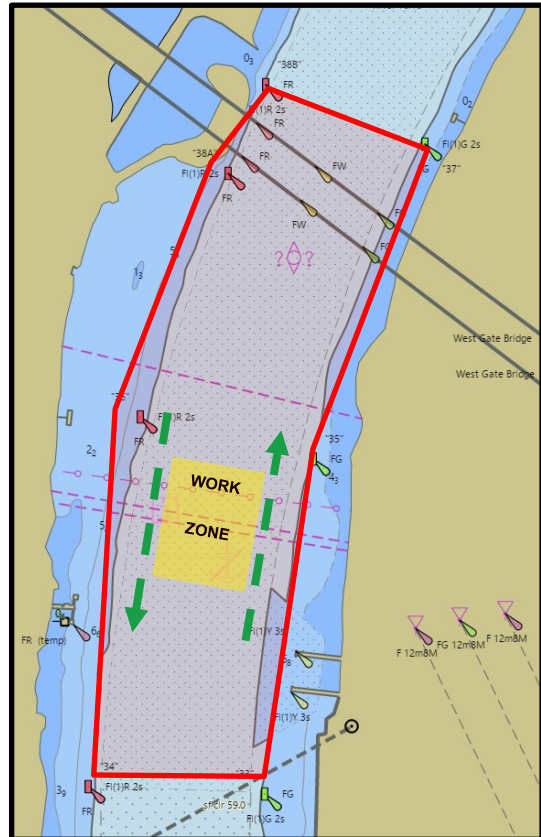
This notice has effect from 7.00 am on 20 September 2024 to 5.00 pm on 16 May 2025.

Dated 12 September 2024

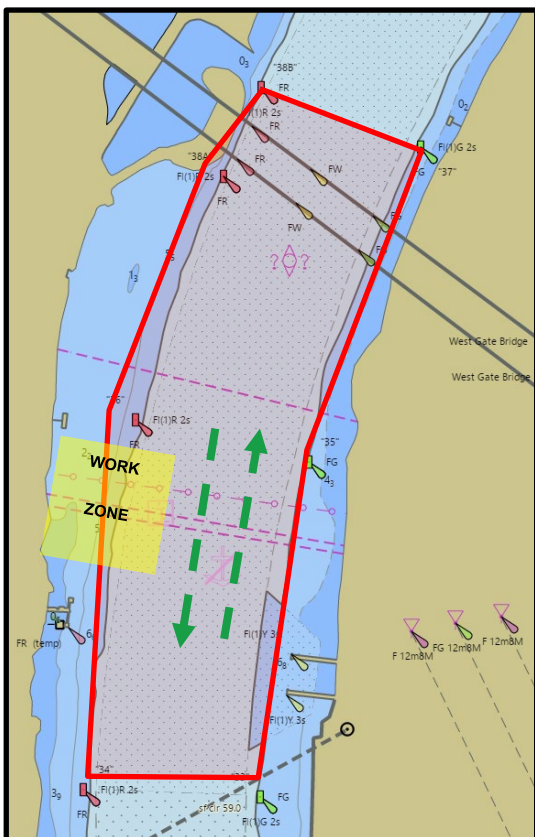
BY ORDER OF PORTS VICTORIA



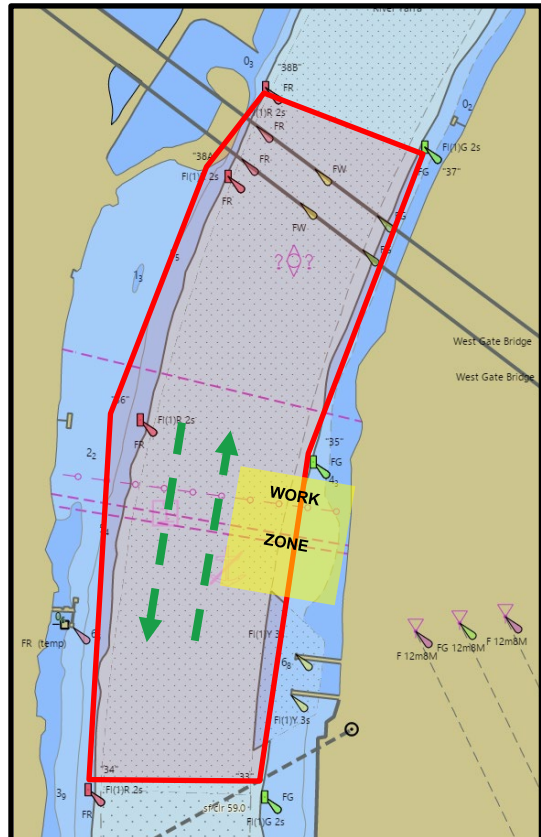
**MINIMUM WAKE AND WASH ZONE - FIGURE 1**  
**NOT FOR NAVIGATIONAL USE**



**CENTRAL WORKS ZONE - FIGURE 2**  
**NOT FOR NAVIGATIONAL USE**



**WESTERN WORKS ZONE - FIGURE 3**  
**NOT FOR NAVIGATIONAL USE**



**EASTERN WORKS ZONE - FIGURE 4**  
**NOT FOR NAVIGATIONAL USE**





**PRODIVER**



**JAZZ1 – SECURITY VESSEL**



**VIKING**