

The following Notice to Mariners is published for general information

Australia – Victoria

No. 414 (T) - 2024

**PORT OF MELBOURNE
PORT PHILLIP BAY
SEAFLOOR SAMPLING**

Date: 2 October 2024

Refers: N/A

Details: Mariners are advised that seafloor sampling, involving diving operations, will take place from **8 October** to **7 November 2024**, between **0800 hrs** and **1700 hrs**. Sampling works will be conducted around shipping movements.

Sampling will be supported by the vessel ***Draughtsman*** and will be conducted in the following locations (reference figure 1):

Site name	Latitude	Longitude
L1	38° 01.696'S	144° 53.071'E
L2	38° 01.221'S	144° 52.126'E
L3	37° 59.924'S	144° 53.394'E
L4	37° 57.396'S	144° 57.417'E
L5	38° 01.943'S	144° 58.192'E
L6	38° 06.524'S	144° 45.514'E
L7	38° 00.873'S	144° 46.264'E
R1-4	37° 59.269'S	144° 53.853'E
HR	37° 58.344'S	144° 50.303'E

The vessel ***Draughtsman*** is contactable on 0420 981 345 or on VHF Channel 12.

Vessels engaged in diving operations will display International Code flag “Alpha”.

Restrictions for passing domestic commercial vessels and recreational vessels during **diving operations**:

- **Maximum speed of 5 knots**
- **Minimum passing distance of 100m**

For further information, please email the Navigation Services department at NavigationServices@ports.vic.gov.au or contact Melbourne VTS / Lonsdale VTS on 9644 9700 or VHF Channel 12.

Mariners are advised to navigate with caution in the vicinity of the sampling works.

**Charts &
Publications
affected:** AUS 155
 ENC AU5MEL01

Further notice: This is a self-cancelling NtM, and no further notice will be issued.



Paul Fleming
Acting Deputy Harbour Master
Navigation Services

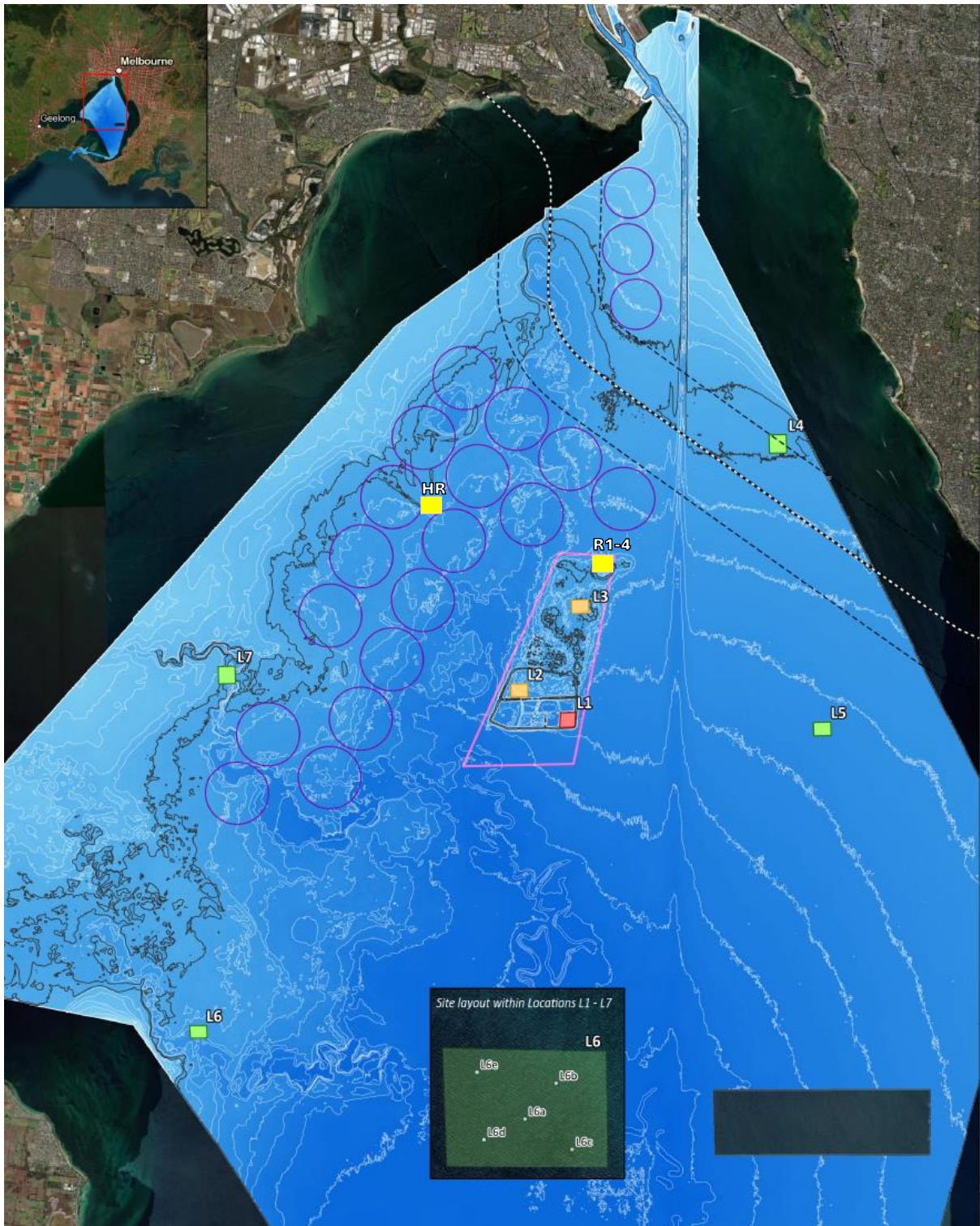


FIGURE 1 – SEAFLOOR SAMPLING APPROXIMATE LOCATIONS

(NOT FOR NAVIGATIONAL USE)

This notice is a direction of the Harbour Master pursuant to section 232 of the *Marine Safety Act 2010* (Vic)
The requirements of section 232(2) have been taken into account.

Ports Victoria Notices to Mariners can be downloaded from the website, ports.vic.gov.au