

The following Notice to Mariners is published for general information

Australia – Victoria

No. 416 (T) - 2024

**PORT OF MELBOURNE
SOUTH CHANNEL**

SAND WAVE SHOALING AND DUKC MONITORING

Date: 3 October 2024

Refers: N/A

Details: Mariners are advised that sand wave shoaling has been identified in **South Channel** on the northern and southern toe lines.

Masters and Pilot Service Providers are advised the **width** of the **Dynamic Under Keel Clearance (DUKC) system nodes** in South Channel for affected areas may be reduced up to a maximum of **25m** from a toe line (reference example figure 1 and 2).

Commercial vessels (SOLAS) transiting South Channel with a draught 11.6m or greater shall not transit waters outside of the DUKC node.

Masters and Pilots are advised to navigate with additional caution and monitor the **DUKC system for the affected areas.**

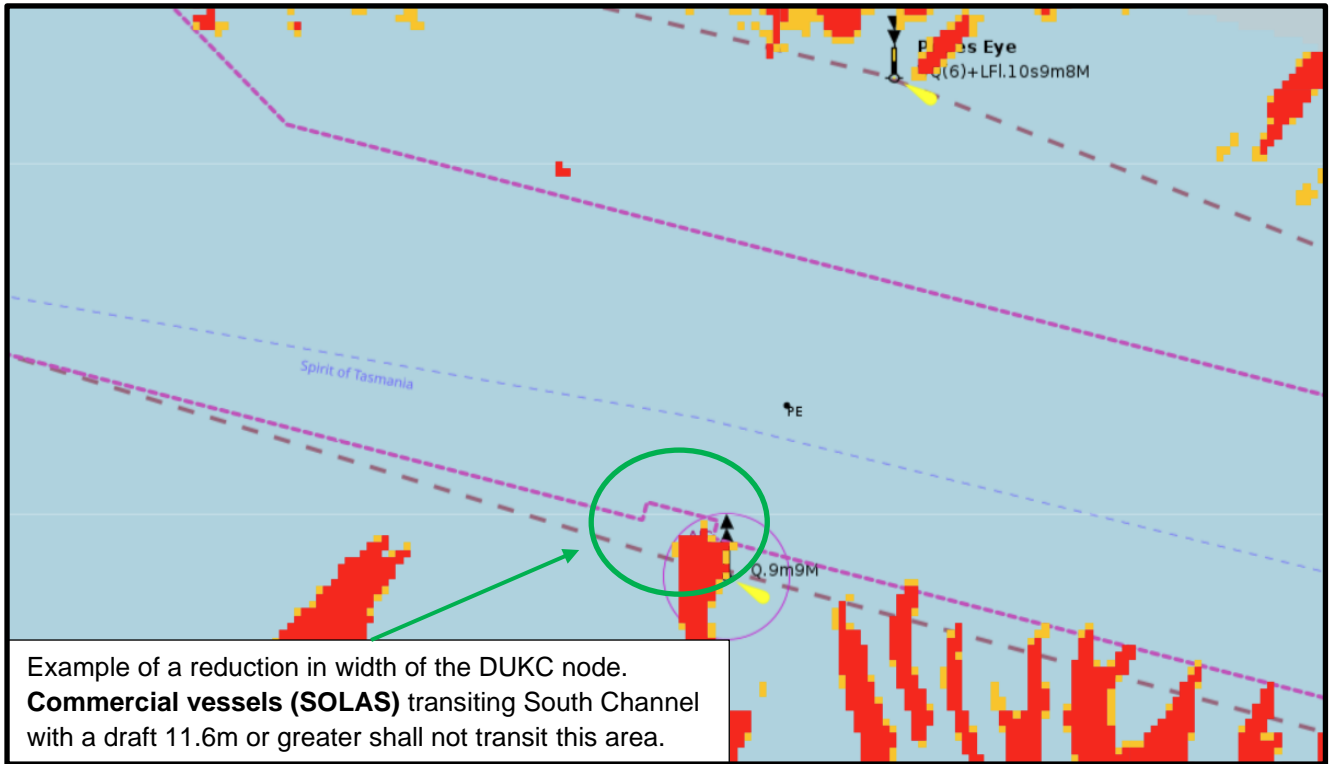
For further information, please email the Navigation Services department at NavigationServices@ports.vic.gov.au.

Charts & Publications affected: ENC AU5RIP01

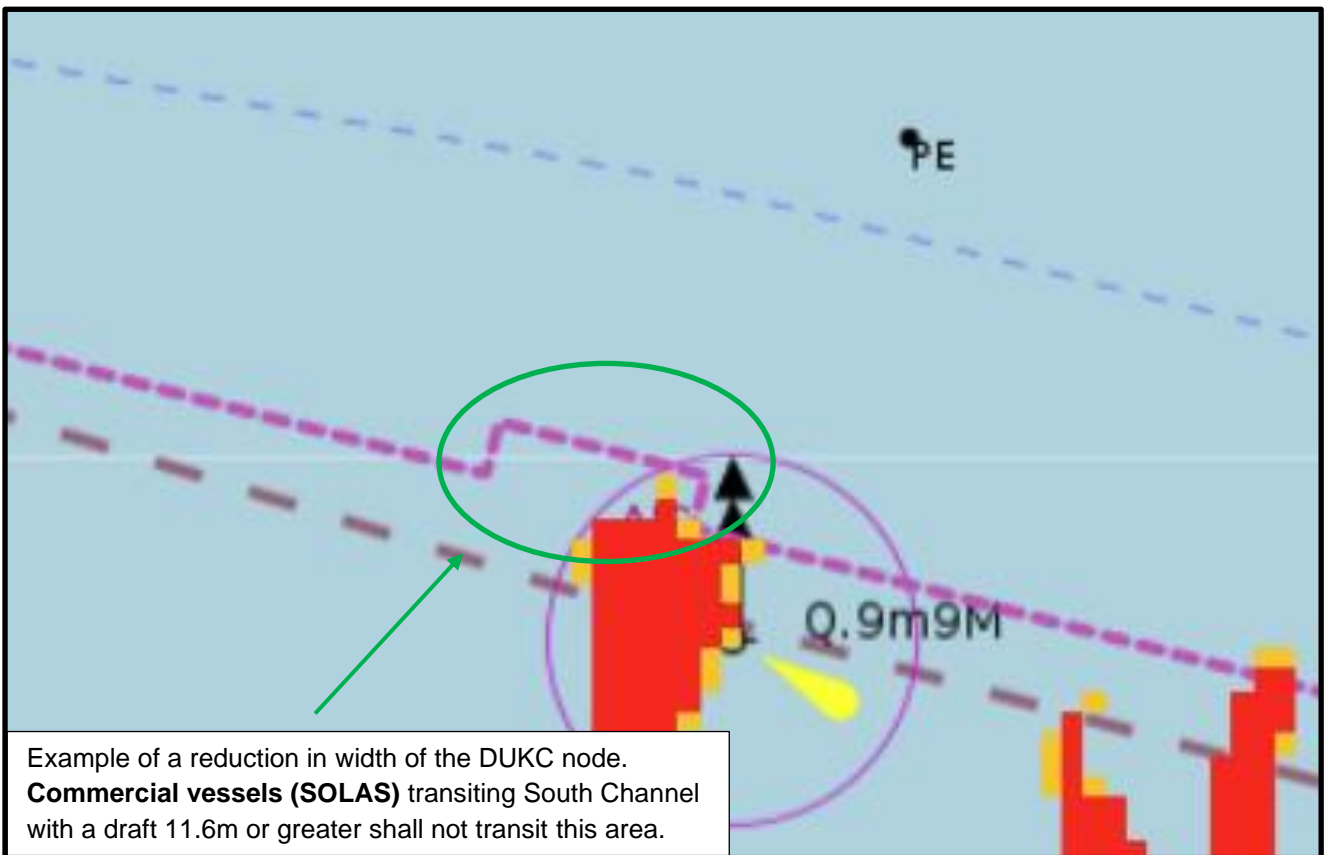
Further notice: Further notice will be issued.



David Tilsley
Acting Harbour Master



EXAMPLE FIGURE 1 - NOT FOR NAVIGATIONAL USE



EXAMPLE FIGURE 2 - NOT FOR NAVIGATIONAL USE

This notice is a direction of the Harbour Master pursuant to section 232 of the *Marine Safety Act 2010 (Vic)*. The requirements of section 232(2) have been taken into account.

Ports Victoria Notices to Mariners can be downloaded from the website, ports.vic.gov.au