

The following Notice to Mariners is published for general information

## Australia – Victoria

No. 478 (T) - 2024

### PORT OF MELBOURNE APPLETON DOCK B BERTH CHAINAGE RESTRICTION DUE TO WORKS

**Date:** 8 November 2024

**Refers:** NtM 299 (T) – 24

**Details:** Mariners are advised that **Appleton Dock B berth** will not be available for commercial vessels (SOLAS) between chainage **0m to 150m** from **11 November 2024 until further notice**.

The western most bollard available for use during works is located at chainage **135m** (reference bollard availability diagram).

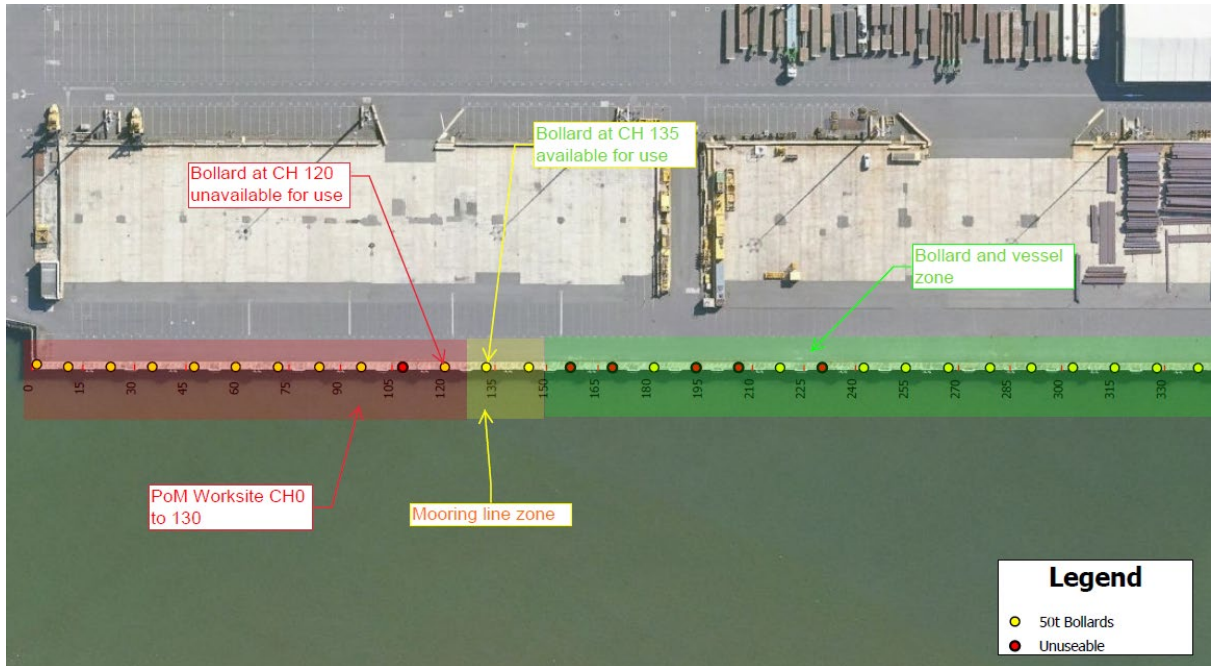
For further information, please email the Navigation Services department at [NavigationServices@ports.vic.gov.au](mailto:NavigationServices@ports.vic.gov.au) or contact Melbourne VTS on 9644 9700 / VHF Channel 12.

**Charts & Publications affected:** ENC AU5MEL01

**Further notice:** Further notice will be issued.



**David Tilsley**  
Deputy Harbour Master  
Navigation Services



Appleton Dock B berth – Bollard availability during works