

The following Notice to Mariners is published for general information

Australia – Victoria

No. 491 (T) - 2024

**PORT OF MELBOURNE
SOUTH WHARF BERTH 30 AND 31
REMIEDIATION WORKS**

Date: 14 November 2024

Refers: N/A

Details: Mariners are advised that berth remediation works, involving under wharf works and diving operations, will be undertaken at **South Wharf berth 30 and 31** from **16 November 2024** until further notice.

Works will be conducted **Monday to Saturday** from **0700 hrs to 1700 hrs** around shipping.

The following conditions will apply during **under wharf works** and **diving operations**:

1. **Works contractor** to notify **towage vessels** berthed at South Wharf berth 29, 30 or 31.
2. **30 minutes** prior to a **towage vessel** arriving at South Wharf berth 29, 30 or 31, diving operations to cease. **Towage vessels** to contact dive supervisor on VHF Ch 07 prior to arrival.
3. **30 minutes** prior to a **commercial vessel (SOLAS)**, including the bunker vessel, entering **Swanson Dock swing basin** or **passing South Wharf berths 30 and 31**, the following applies:
 - **Under wharf works and diving operations to cease**
4. **No diving operations** or **hot works** will take place when **bunkering** is being conducted at South Wharf berth 29, 30 or 31.

MDT 81 Barge (LOA 23m x Beam 7m) maybe positioned at South Wharf berth 30 or 31 with **flashing yellow lights** established on bow and stern.

Restrictions for passing **domestic commercial vessels** and **recreational vessels** during **works**:

- **Minimum wake and wash**
- **Minimum passing distance of 50m**

Dive vessels will display International Code flag Alpha during diving operations.

Works supervisor can be contacted on **0492 907 735**. Vessels supporting works can be contacted on VHF Channel 12.

Mariners are advised to navigate with additional caution in the vicinity of South Wharf berth 30 and 31 during works.

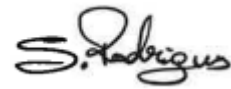
For further information, please email the Navigation Services department at NavigationServices@ports.vic.gov.au or contact Melbourne VTS on 9644 9700 / VHF Channel 12.

Charts & Publications affected:

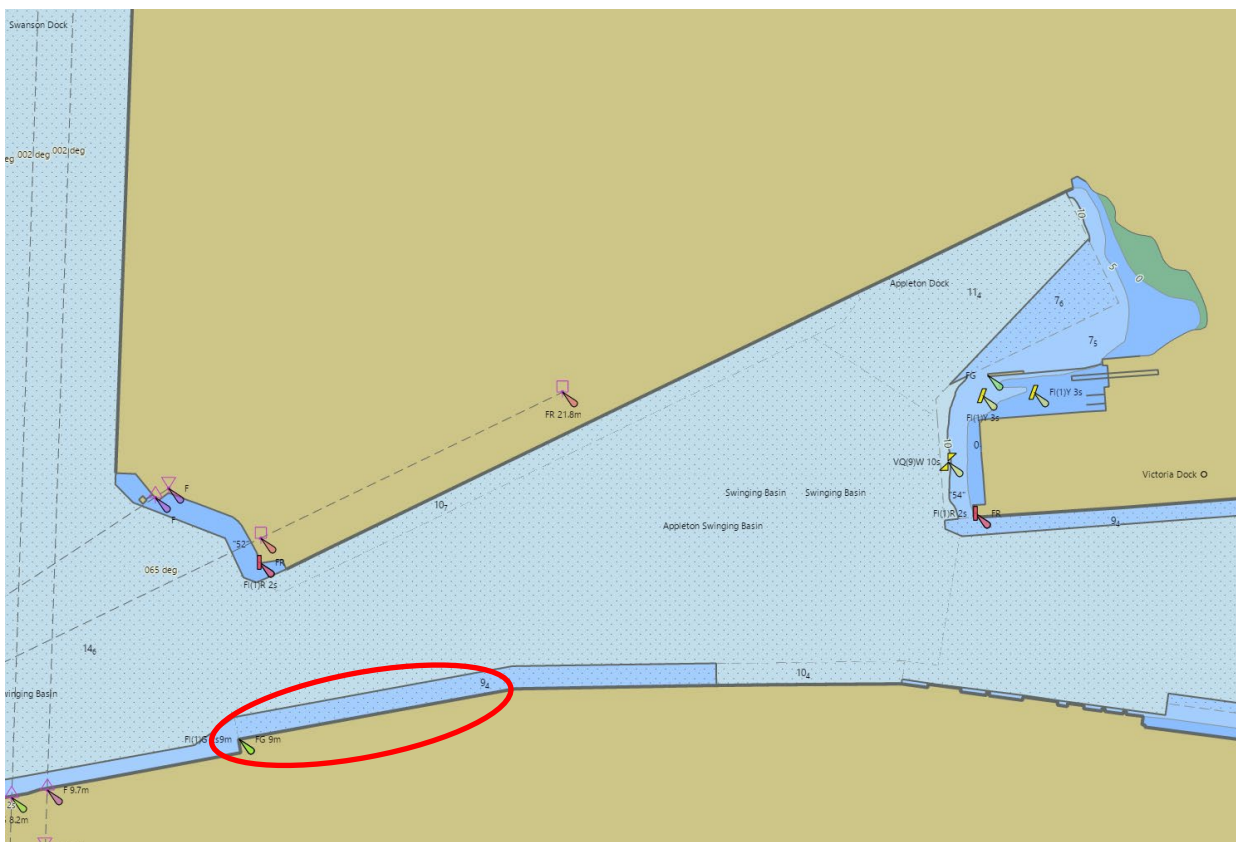
ENC AU5MEL01

Further notice:

Further notice will be issued.



**Sheldon Rodrigues
Acting Harbour Master**



NOT FOR NAVIGATIONAL USE

This notice is a direction of the Harbour Master pursuant to section 232 of the *Marine Safety Act 2010 (Vic)*
The requirements of section 232(2) have been taken into account.

Ports Victoria Notices to Mariners can be downloaded from the website, ports.vic.gov.au